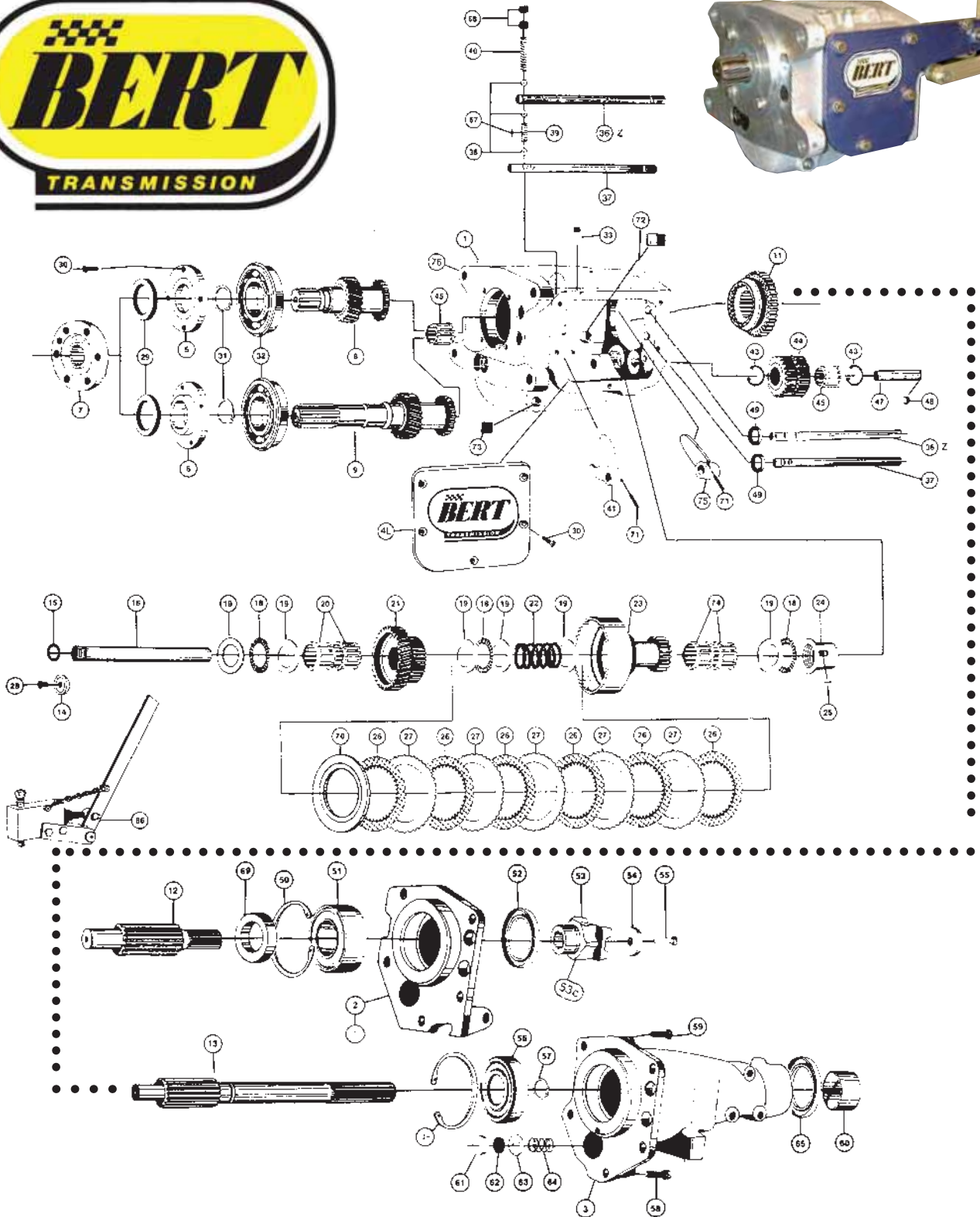
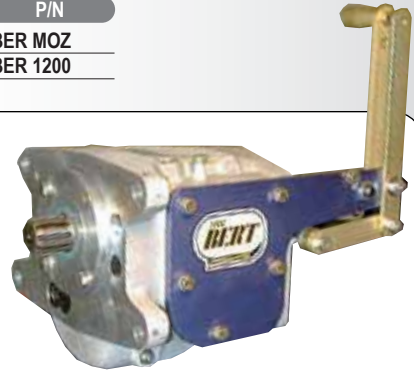


BERT TRANSMISSIONS

DESCRIPTION	P/N
DIRT Mod Aluminum Transmission (44 pounds)	BER MOZ
GEN II Lightweight Modified Transmission (34.65 pounds)	BER 1200



BERT TRANSMISSION PARTS LIST

ITEM	P/N	DESCRIPTION	ITEM	P/N	DESCRIPTION
1	BER 001	Main Casting	41	BER 041	Shifting Fork Direct Drive
2	BER 002	Rear Cover (Open Drive)	43	BER 043	Snap Ring Idler Gear
2	BER 002C	Rear Cover (Closed Drive)	44	BER 044	Reverse Idler Gear
3	BER 003	Tail Housing (Late Model)	45	BER 045	Cage Needle Bearing
4	BER 004L	Side Cover (Late Model)	46	BER 046	Snap Ring (Late Model)
4	BER 004M	Side Cover (Modified)	47	BER 047	Reverse Idler Shaft
5	BER 005	Front Seal Cover (Short Input)	48	BER 048	Woodruff Key
6	BER 006	Front Seal Cover (Long Input)	49	BER 049	Seal
7	BER 007	Drive Flange	50	BER 050	Snap Ring Modified
8	BER 008	Input Modified*(8Z)	51	BER 051	Output Bearing Modified
9	BER 009	Input Late Model*(9Z)	52	BER 052	Rear Oil Seal
11	BER 011	Direct Slider*(11Z)	53	BER 053	Yoke
12	BER 012	Output Modified	53	BER 053C	Yoke (Closed Drive)
13	BER 013	Output Late Model	54	BER 054	Rear Yoke Washer
14	BER 014	Counter Shaft Locking Washer	55	BER 055	Bolt 3/8" F X 1 1/4"
15	BER 015	O Ring	56	BER 056	OutPut Bearing Late Model
16	BER 016	Counter Shaft	57	BER 057	Snap Ring (Late Model)
18	BER 018	Thrust Needle Roller	58	BER 058	Hex Socket Cap Screw 7/16"C X 1 1/4"
19	BER 019	Thrust Washer A-.030"/B-.060"/C.090"	59	BER 059	Cap Screw 7/16"C X 1 1/4"
20	BER 020	Cage Needle Roller (3/4")	60	BER 060	Extension Bushing
21	BER 021	Front Counter Gear	61	BER 061	Piston 1 3/8"
22	BER 022	Spring Counter	62	BER 062	Break Cup 1 3/8"
23	BER 023	Rear Counter Gear	63	BER 063	Break Cup Extender
24	BER 024	Push Sleeve	64	BER 064	Spring
25	BER 025	Push Sleeve Key	65	BER 065	Rear Oil Seal
26	BER 026	Clutch Disk	66	BER 066	Clutch Master
27	BER 027	Steel Clutch	67	BER 067	Interlock Pin
28	BER 028	Button Head Screw 5/16"C X 1/2"	68	BER 068	Filling Plug
29	BER 029	Front Oil Seal	69	BER 069	Output Spacer
30	BER 030	Bolt 5/16"C X 1"	70	BER 070	Clutch Spacer
31	BER 031	Snap Ring	71	BER 071	Fork Retaining Pin
32	BER 032	Front Input Bearing	72	BER 072	Magnetic Plug
33	BER 033	Air Vent	73	BER 073	Drain Plug
36	BER 036	Low & Direct Shifting Rod	74	BER 074	Cage Needle Bearing
37	BER 037	Reverse Shifting Rod	75	BER 075	Reverse Shifting Fork
38	BER 038	Detent Ball	76	BER 076	Frost Plug 3/4
39	BER 039	Detent Spring	77	BER 077	Shifter detent Ball (Modified)
40	BER 040	Detent Spring High-Gear	78	BER 078M	Shifter Assembly

BERT TRANSMISSION SHIFTER PARTS

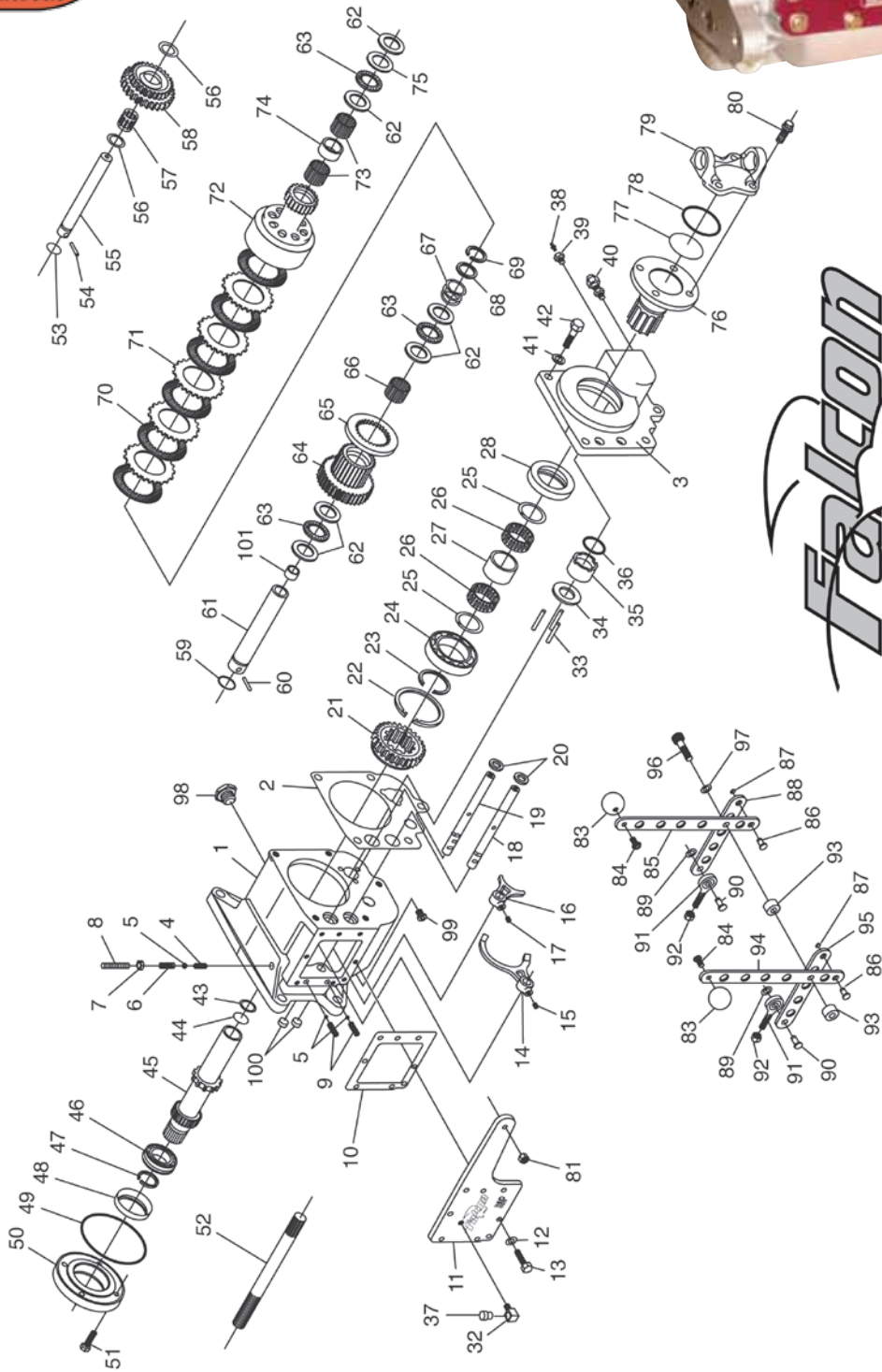


DESCRIPTION	P/N
BERT Shifter Assembly (comes complete with rod ends and side cover)	BER 078M
Replacement Reverse Shifter Handle	BER 080B
Replacement High/Low Shifter Handle	BER 080A
Replacement Reverse Link (between rod end and shifter handle)	BER 078B
Replacement High/Low Link (between rod end and shifter handle)	BER 078A
Replacement Shifter Knob	BRP 907
Replacement Clutch Master Cylinder	BRK 15-1511
Replacement Clutch Handle	BRP 4420-1

Use **TOR A200022** MTF Transmission Fluid

WINTERS TRANSMISSIONS

DESCRIPTION	P/N
Winters Aluminum Modified Transmission (38 pounds)	WIN 60150



WINTERS TRANSMISSION PARTS LIST

ITEM	P/N	DESCRIPTION	ITEM	P/N	DESCRIPTION
1	BER 001	Main Casting	41	BER 041	Shifting Fork Direct Drive
2	BER 002	Rear Cover (Open Drive)	43	BER 043	Snap Ring Idler Gear
2	BER 002C	Rear Cover (Closed Drive)	44	BER 044	Reverse Idler Gear
3	BER 003	Tail Housing (Late Model)	45	BER 045	Cage Needle Bearing
4	BER 004L	Side Cover (Late Model)	46	BER 046	Snap Ring (Late Model)
4	BER 004M	Side Cover (Modified)	47	BER 047	Reverse Idler Shaft
5	BER 005	Front Seal Cover (Short Input)	48	BER 048	Woodruff Key
6	BER 006	Front Seal Cover (Long Input)	49	BER 049	Seal
7	BER 007	Drive Flange	50	BER 050	Snap Ring Modified
8	BER 008	Input Modified*(8Z)	51	BER 051	Output Bearing Modified
9	BER 009	Input Late Model*(9Z)	52	BER 052	Rear Oil Seal
11	BER 011	Direct Slider*(11Z)	53	BER 053	Yoke
12	BER 012	Output Modified	53	BER 053C	Yoke (Closed Drive)
13	BER 013	Output Late Model	54	BER 054	Rear Yoke Washer
14	BER 014	Counter Shaft Locking Washer	55	BER 055	Bolt 3/8" F X 1 1/4"
15	BER 015	O Ring	56	BER 056	OutPut Bearing Late Model
16	BER 016	Counter Shaft	57	BER 057	Snap Ring (Late Model)
18	BER 018	Thrust Needle Roller	58	BER 058	Hex Socket Cap Screw 7/16"C X 1 1/4"
19	BER 019	Thrust Washer A-.030"/B-.060"/C.090"	59	BER 059	Cap Screw 7/16"C X 1 1/4"
20	BER 020	Cage Needle Roller (3/4")	60	BER 060	Extension Bushing
21	BER 021	Front Counter Gear	61	BER 061	Piston 1 3/8"
22	BER 022	Spring Counter	62	BER 062	Break Cup 1 3/8"
23	BER 023	Rear Counter Gear	63	BER 063	Break Cup Extender
24	BER 024	Push Sleeve	64	BER 064	Spring
25	BER 025	Push Sleeve Key	65	BER 065	Rear Oil Seal
26	BER 026	Clutch Disk	66	BER 066	Clutch Master
27	BER 027	Steel Clutch	67	BER 067	Interlock Pin
28	BER 028	Button Head Screw 5/16"C X 1/2"	68	BER 068	Filling Plug
29	BER 029	Front Oil Seal	69	BER 069	Output Spacer
30	BER 030	Bolt 5/16"C X 1"	70	BER 070	Clutch Spacer
31	BER 031	Snap Ring	71	BER 071	Fork Retaining Pin
32	BER 032	Front Input Bearing	72	BER 072	Magnetic Plug
33	BER 033	Air Vent	73	BER 073	Drain Plug
36	BER 036	Low & Direct Shifting Rod	74	BER 074	Cage Needle Bearing
37	BER 037	Reverse Shifting Rod	75	BER 075	Reverse Shifting Fork
38	BER 038	Detent Ball	76	BER 076	Frost Plug 3/4
39	BER 039	Detent Spring	77	BER 077	Shifter detent Ball (Modified)
40	BER 040	Detent Spring High-Gear	78	BER 078M	Shifter Assembly



DESCRIPTION	P/N
Replacement Shifter Assembly (comes complete with rod ends)	WIN 60115S
Winters Transmission Fluid	WIN 61733
Replacement Clutch Master Cylinder	BRK 15-1511
Replacement Clutch Handle	BRP 4420-1
Replacement Shifter Knob	BRP 907

TRANSMISSION REBUILD KITS ARE ALSO AVAILABLE- CALL FOR DETAILS

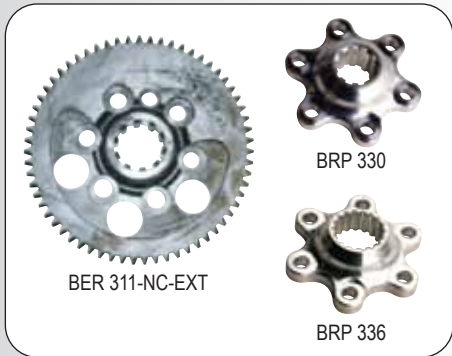
INBOARD BELLHOUSINGS



DESCRIPTION	P/N
BERT Inboard Bellhousing	BER 300
Replacement Idler Gear	BER 303
Replacement Idler Bushing	BER 304
Replacement Idler Shaft	BER 306
Replacement Idler Spring	BER 308
Replacement Idler Washer	BER 309



CRANK FLANGES/FLYWHEELS



DESCRIPTION	P/N
Aluminum Chevy Crank Flange - BERT Transmission	BRP 330
Ford Crank Adaptor (uses Chevy crank flange/flywheel)	BRP 335
Bert Steel Flywheel	BER 370
Bert Aluminum Fly Wheel Shim	BER 324
Steel Chevy Crank Flange - BERT Transmission	BER 007
Steel New Style Crank Flange (with dowel)- BERT Transmission	BER 007NC
602 Crate Engine Crank Flange/Flywheel (1 piece) BERT Trans.	BER 311-NC-EXT
Aluminum Chevy Crank Flange - WINTERS Transmission	BRP 336
Winters Steel Flywheel	WIN 62479A
Steel Chevy Crank Flange - WINTERS Transmission	WIN 62348-18
602 Crate Engine Crank Flange/Flywheel (1 piece) WINTERS Trans.	WIN 63844-18

GUNDRILLED DRIVESHAFTS



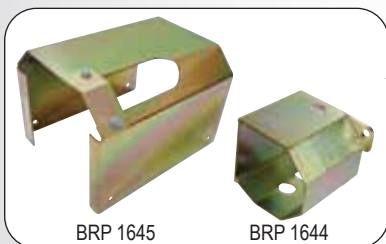
DESCRIPTION	P/N
16"	BRP 4040
18"	BRP 4042
20"	BRP 4044
20" Balanced Assembly (comes with yokes and u-joints installed)	BRP 4044BAL
22"	BRP 4046
24"	BRP 4048

YOKES & U - JOINTS



DESCRIPTION	P/N
16 Spline Steel Yoke (2.05#)	BRP 509
16 Spline Steel Yoke Machined (1.4#)	BRP 510
Solid U Joint	BRP 512
U-Bolt - comes with nuts and lock washers (sold each)	WIN 5855
16 Spline Aluminum Yoke	BRP 333
Replacement Washer for BRP 333 Yoke	BRP 333W
Replacement Snap Ring for BRP 333	BRP 613S
Aluminum Sprint Car U Joint Flange	BRP 332

DRIVESHAFT COVERS



BRP 1645

BRP 1644



Did You Know...
BRP 1645 and BRP 9020 driveshaft covers fit rubber floor cars and standard floor cars. The BRP 1644 yoke cover will only fit GEN 1 transmissions.

DESCRIPTION	P/N
Driveshaft Cover For Winters/Bert Transmission (GEN 1)	BRP 1645
Yoke Cover for Winters/Bert Transmission (GEN 1)	BRP 1644
Driveshaft Cover for Bert GEN II Transmission	BRP 9020

SHIFTER EXTENSIONS



DESCRIPTION	P/N
3' Shifter extension kit (comes with mounting bolts) Used for driver back chassis - Fits Winters and Bert Gen I	BRP 9054

STARTERS



TP 3NEM

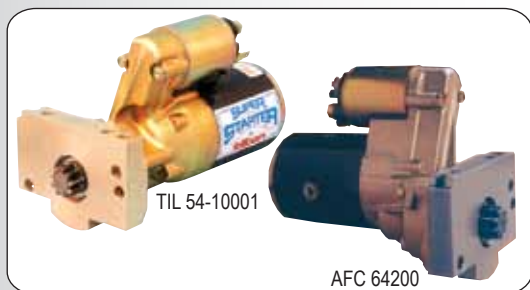
BSC 210

Inboard Starters

DESCRIPTION	P/N
180 ft/pound Torque Inboard Starter	BSC 210
215 ft/pound Torque Inboard Starter	BSC 215
Total Power 3HP Inboard Starter (sealed to keep moisture out)	TP 3NEM

Conventional Starters

DESCRIPTION	P/N
Afco Conventional Starter	AFC 64200
Tilton super Starter	TIL 54-10001
Quarter Master Rear Mount Late Model Starter	QMI 114260
Conventional Mount for 153 or 168 Tooth Flywheel	ROD MIS-PC-2106



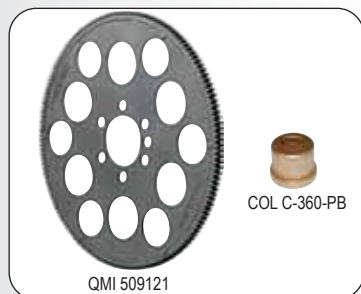
TIL 54-10001

AFC 64200

Tilton Starter Parts

DESCRIPTION	P/N
Pinion gear for starter drive assembly TIL 54-020	TIL 54-043
Starter drive assembly	TIL 54-021
Pinion gear for starter drive assembly TIL 54-021	TIL 54-042
Starter drive assembly - counter clockwise rot. 9 tooth - 12/14 P.P.	TIL 54-021R
Pinion gear for starter drive assembly TIL 54-021R	TIL 54-042R
Solenoid for most starters except TIL 54-11050	TIL 54-022
Brush plate and brushes for most starters except severe duty	TIL 54-023
Drive return spring and retainer	TIL 54-906

FLEXPLATES



QMI 509121

COL C-360-PB



LEF 075-1406

DESCRIPTION	P/N
153 Tooth Flexplate	QMI 509121
Chevy Long Pilot Bushing	COL C-360-PB
Stamped Steel Clutch Fork	LEF 075-1406

BRP SHIFTER BALL



BRP 9057

DESCRIPTION	P/N
2" Billet Aluminum Shifter Ball - Red Anodized (3/8" C threads)	BRP 9057

QUARTER MASTER CLUTCHES & PARTS



QMI 298108



V Drive Clutches

DESCRIPTION	SPLINE	DIAMETER	P/N
2 Disc Early Chevy (2 piece Rear Main)	1 1/8" X 10	7.25"	QMI 298108
2 Disc Externally Balanced for Crate Engines	1 1/8" X 10	7.25"	QMI 298103ZZ

Pro Series Replacement Clutch Discs

DESCRIPTION	SPLINE	DIAMETER	P/N
2 Disc Friction Pack	1 1/8" X 10	5.5"	QMI 225080
2 Disc Friction Pack	1 5/32" X 26	5.5"	QMI 225090
2 Disc Friction Pack	1 1/8" X 10	7.25"	QMI 226080
3 Disc Friction Pack	1 5/32" X 26	5.5"	QMI 325090



Floater Plate

DESCRIPTION	P/N
Pro Series 5.5" Clutch Floater Plate	QMI 105506



Flexplates

DESCRIPTION	P/N
Early Chevy, 2 Piece Rear Main Seal, 153 Teeth	QMI 509121
Early Chevy, 2 Piece Rear Main Seal, 153 Teeth - Lightweight	QMI 509180

Hydraulic Release Bearings

DESCRIPTION	P/N
710 Series Hydraulic Release Bearing Assembly, 2.00" Contact	QMI 710100
Bearing Assembly, Street, 10.5 & Larger, Flat Face	QMI 721100



QMI 710100

QMI 721100

Release Bearing Seal Kits

DESCRIPTION	P/N
Seal Kit for 710 Series Hydraulic Release Bearings	QMI 710101
Seal Kit for 721 Series Hydraulic Release Bearings	QMI 721101