

## STOCK STUB STEERING

### Center Link PS



#### Did You Know...

\* The listed tie rod ends work together to replace stock tie rod assemblies. To replace stock parts, use the following:  
Left - AFC 30234  
Right - AFC 30235

DESCRIPTION	P/N
Center Link PS	AFC 30272
Outer Tie Rod	AFC 30210*
Inner LH Tie Rod	AFC 30208*
Inner RH Tie Rod	AFC 30209*
Adjuster Sleeve	AFC 30233
Idler Arm	AFC 30262



### Inner Tie Rods

DESCRIPTION	P/N
7 1/4" Inner Tie Rod RH Thread	AFC 30201
4" Long Inner Tie Rod - 5/8" RH Thread	AFC 30238
4" Long Inner Tie Rod - 5/8" LH Thread	AFC 30239



## SWIVEL STABILIZER EYES

DESCRIPTION	P/N
Aluminum Assembly- 7/8" C Threads	BRP 6185
Replacement Aluminum Eye	BRP 6186
Replacement Aluminum Shaft- 7/8" C Threads	BRP 6187
Steel Assembly- 7/8" C Threads	BRP 6188
Replacement Steel Eye	BRP 6189
Replacement Steel Shaft- 7/8" C Threads	BRP 6190
7/8" C weld nut	BRP 6191
1/4" C detent ball	BRP 509008
3/8" C detent ball	BRP 509009

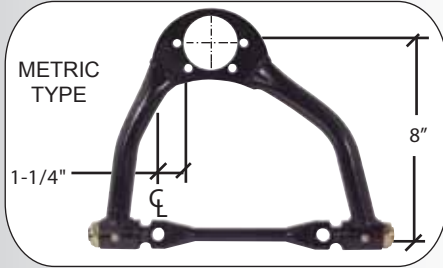


## FIXED END STABILIZER EYES

DESCRIPTION	P/N
Solid Aluminum eye bolt - 7/8" C Threads	BRP 6180
Solid Steel eye bolt - 7/8" C Threads	PCR 100-2815
7/8" C Jam Nut	BRP 6182

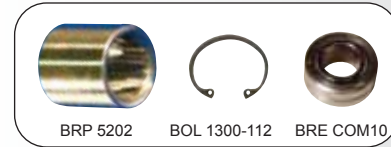
## UPPER CONTROL ARMS

### Port City Racing 4 Bolt Upper Control Arms



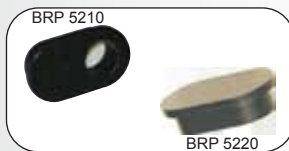
LENGTH	TYPE	APPLICATION	ALUMINUM P/N	STEEL P/N
7"	Strut		PCR 100-01-0700	
7 3/4"	Strut	Bullitt, WRC, Masterbuilt, Goddard, BRC	PCR 100-01-0730	
8"	Strut	Some strut pavement cars	PCR 100-01-0800	PCR 100-01-0800S
8 1/4"	Strut	AFCO, Shaw, Rayburn, Harris, BRC	PCR 100-01-0810	PCR 100-01-0810S
8 1/2"	Strut	Some wide cars (with spacers)	PCR 100-01-0820	PCR 100-01-0820S
8 3/4"	Strut	L.H. some pavement cars, BRC	PCR 100-01-0830	PCR 100-01-0830S
8 3/4"	Offset	Stock Stub GM (use BRP 2015 mount) L.H.	PCR 100-01-0832LHS	
8 3/4"	Offset	Stock Stub GM (use BRP 2015 mount) R.H.	PCR 100-01-0831LHS	
9"	Strut	L.H. narrow Howe, American Made	PCR 100-01-0900	PCR 100-01-0900S
9 1/4"	Strut	R.H. some pavement cars, "wide" Bullitt	PCR 100-01-0910	PCR 100-01-0910S
9 1/2"	Strut	R.H. & L.H. wide Rayburn, Shaw	PCR 100-01-0920	PCR 100-01-0920S
9 3/4"	Strut		PCR 100-01-0930	PCR 100-01-0930S
10"	Strut	R.H. wide Howe	PCR 100-01-1000	PCR 100-01-1000S
11"			PCR 100-01-1100	PCR 100-01-1100S
8"		Metric Right Side		PCR 100-06-0800RHS-1
8 1/2"		Metric Left Side		PCR 100-06-0820LHS-1
8"		Metric Right Side - 1 1/4" Offset		UBM 15-0809-5R
8 1/2"		Metric Left Side - 1 1/2" Offset		UBM 15-0829-6L

## ADJUSTABLE CROSS SHAFTS



DESCRIPTION	5/8" END	3/4" END
Steel Assembly	BRP 5200	BRP 5211
Aluminum Assembly	BRP 5200A	N/A
Steel Shaft Only	BRP 5201	BRP 5212
Aluminum Shaft Only	BRP 5201A	N/A
Monoball Bearing	BRE COM10	BRE COM12
Bearing Retainer Housing	BRP 5202	BRP 5213
Steel Spacer	BRP 721	BRP 734
Snap Ring	BOL 1300-112	BOL 1300-137

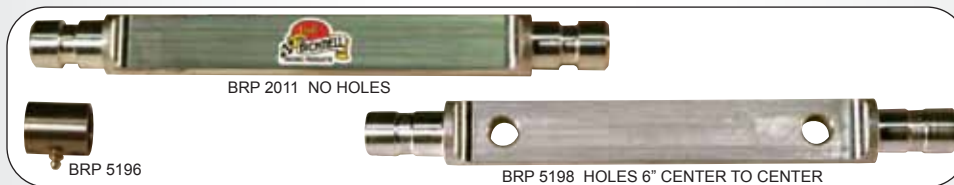
### Offset Camber Adjustable Bushings for 5200/5201/5211/5212 Cross Shaft



DEGREE OF OFFSET	ALUMINUM 1/2" HOLE	ALUMINUM 9/16" HOLE	STEEL
0	BRP 5204	BRP 5204-9/16	
1/16"	BRP 5205	BRP 5205-9/16	
1/8"	BRP 5206	BRP 5206-9/16	
3/16"	BRP 5207	BRP 5207-9/16	
1/4"	BRP 5208	BRP 5208-9/16	
5/16"	BRP 5209	BRP 5209-9/16	
3/8"	BRP 5210	BRP 5210-9/16	
No Hole			BRP 5220

**Did You Know...**  
Offset camber bushings are available with 1/2" holes and 9/16" holes... be sure to order the correct application!

## ALUMINUM CROSS SHAFTS



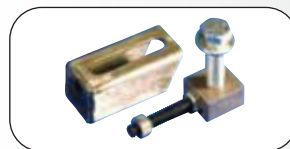
DESCRIPTION	P/N
11 1/4" Aluminum Cross shaft (holes 6" center to center)	BRP 5198
.875" I.D. Bushing for BRP 5198 (sold each)	BRP 5196
11 1/2" Aluminum Cross shaft (no holes)	BRP 2011
1" I.D. Bushing for BRP 2011 (sold each)	BRP 2012

# OEM SUSPENSION COMPONENTS

## CONTROL ARM MOUNTS



**Did You Know...**  
This Upper Control Arm Mount is made from 3/8" steel plate, has 6" hole centers and has 2 degrees of anti-dive.



DESCRIPTION	P/N
3/8" Steel Upper Control Arm Mounting Plate	BRP 2015

DESCRIPTION	P/N
Slotted Control Arm Mount (left picture)	LEF 002-22688
Threaded Block Assembly (right picture)	LEF 002-2286

## UPPER BALL JOINTS



AFC 20031

AFC 20032

AFC 20032-1

AFC 20033

AFC 20034

DESCRIPTION	P/N
Most popular ball joint. Fits Shaw, Howe, WRC, Rayburn, Harris, & upper taper of pinto spindle	AFC 20031
Full size 71-84 Impala spindles, 71-81 Camaro & 73-84 chevelle. Does not fit AFCO arm	AFC 20032
Used on IMCA cars to raise roll center. Fits AFCO upper upper arms	AFC 20032-1
64-72 Chevelle lower arm and spindle. Most popular IMCA modified application	AFC 20033
Fits Troyer & Howe modifieds. Also fits upper and lower taper in pinto spindle (same taper as AFC 20031)	AFC 20034

## LOWER BALL JOINTS



PCR 100-3K719

AFC 20036

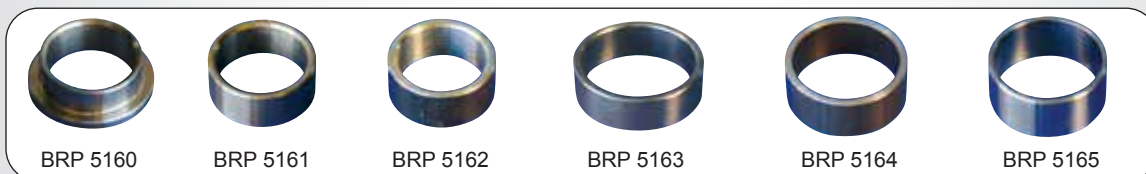
AFC 20038

AFC 20038-1

AFC 20039

DESCRIPTION	P/N
Fits Troyer Upper and lower	PCR 100-3K719
Most popular lower ball joint. Fits nearly all strut cars	AFC 20036
Fits all Howe cars & wide type dirt cars. Also fits 71-76 Impala spindle	AFC 20038
Used on IMCA cars to raise roll centers. Fits Impala spindle and welds into stock lower control arm	AFC 20038-1
S-10 joint used on some mini-stocks. Also fits 71-81 Camaro, 73-84 Chevelle, and 77-84 Impala	AFC 20039

## BALL JOINT SLEEVES



BRP 5160

BRP 5161

BRP 5162

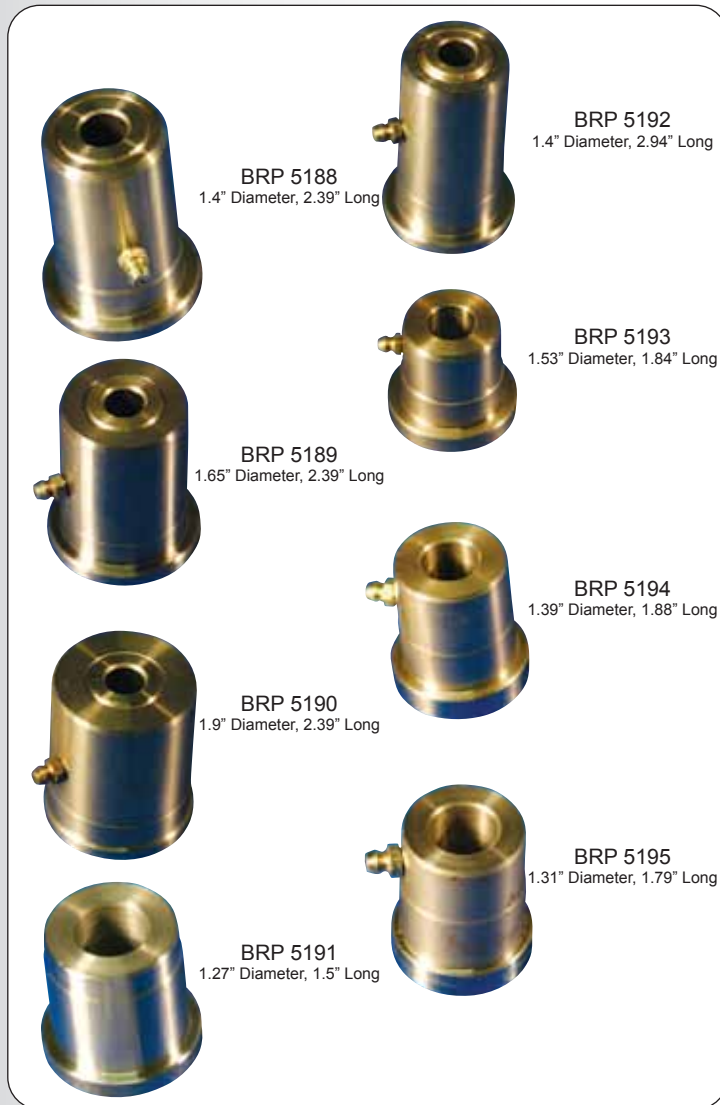
BRP 5163

BRP 5164

BRP 5165

DESCRIPTION	P/N
Large threaded sleeve with flange. Fits AFC 20036 ball joint	BRP 5160
Large threaded sleeve. Fits AFC 20036 ball joint	BRP 5161
Small threaded sleeve. Fits AFC 20034 & PCR 100-3K719 ball joints	BRP 5162
Smooth bore sleeve. Fits AFC 20039 ball joint	BRP 5163
Smooth bore sleeve. Fits AFC 20038 ball joint	BRP 5164
Smooth bore sleeve. Fits AFC 20038-1	BRP 5165

## CONTROL ARM BUSHINGS



## LOWER

*Chevelle, Monte Carlo, Intermediate*

DESCRIPTION	P/N
79-81 (front)	BRP 5192
64-66 (front) 2nd design	BRP 5188
67-74 (front)	
64-66 (front) 1st design	BRP 5189
75-77 (front) drill sleeve	
82-82 (front) drill sleeve	
84-72 (rear)	
78-83 (rear) drill mount	
73-77 (rear) drill sleeve	BRP 5190

*Camaro, Firebird*

DESCRIPTION	P/N
67-74 (front)	BRP 5188
75 - up (front) drill sleeve	BRP 5189
67-72 (rear)	
73-81 (rear) drill sleeve	BRP 5190

## UPPER

*Chevelle, Monte Carlo, Intermediate*

DESCRIPTION	P/N
67-82 (all)	BRP 5191
78 - up(all)	BRP 5193
73-77 (front)	BRP 5194
73-77 (rear)	BRP 5195

*Camaro, Firebird*

DESCRIPTION	P/N
67-69 (all)	BRP 5191
74-79 (front)	BRP 5194
74-79 (rear)	BRP 5195

## BALL JOINT ADAPTOR BUSHING



DESCRIPTION	P/N
Adaptor Bushing- used to adapt AFC 20038 ball joint to AFC 20036 taper and works with most dirt spindles.	BRP 5166

## TAPERED REAMERS



DESCRIPTION	APPLICATION	P/N
1 1/2" per foot Taper	Most Tie Rod, Shock eyes, and ball joint AFC20031,20034, 20036 and PCR 100-3K719	AFC 80770
2" per foot Taper	Ball Joints AFC 20032, 20032-1,20038,20038-1, & 20039	AFC 80771

Did You Know...

Bicknell Racing Products also stocks many other tools too! Check out the tool section of this catalog to see other tools...