

# SPRINT/MICRO/MINI & ACCESSORIES

## SPRINT CAR COMPONENTS

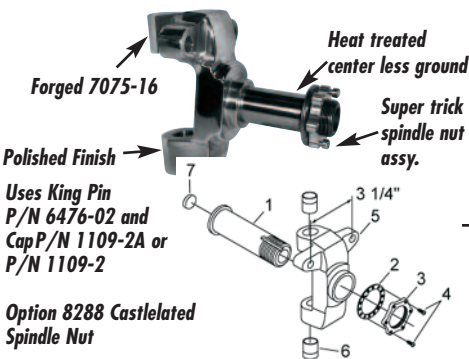
### Steering Arms



1	2	3	4	5	P/N
5.737"	.981"	6.000"	.598"	3-1/4"	WIN3452
5.737"	.981"	N/A	N/A	3-1/4"	WIN3451
5-1/2"	5/8"	N/A	N/A	3-1/4"	WIN3651
5-1/2"	5/8"	6-3/8"	1/2"	3-1/4"	WIN3652

- Dimension from tie rod center-line to king pin
- Dimension from tie rod center-line to spindle
- Dimension from drag link center-line to spindle
- Dimension from drag link center-line to center line of king pin
- Dimension from mounting bolt to mounting bolt

### Aluminum Front Spindle



Sprint 10° Front Spindle Kit P/N WIN3622  
Sprint 10° Front Spindle Kit w/Titanium Shaft P/N WIN3622T

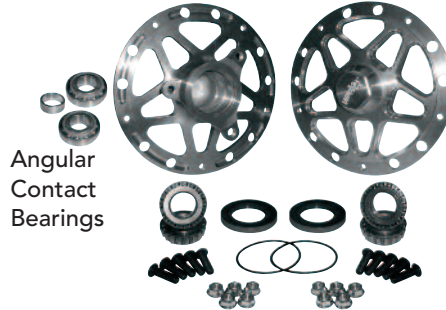
DESCRIPTION	#	QTY	P/N
Spindle Shaft	1*	1	WIN3459
Spindle Shaft, Ti	1*	1	WIN3459T
Lockwasher	2	1	WIN2124
Locknut	3	1	WIN2125
Cap Screw	4	2	WIN2126
Spindle Base	5	1	WIN3458
Bushing	6	2	WIN7515
Core Plug	7	1	WIN7860

\*P/N may vary depending on part ordered

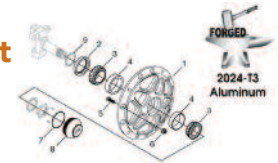
### Aluminum Front Hub Kit

WIN3980

Hub P/N 3783-01 w/ rotor mount Aluminum 4lbs. 13oz. w/ races and studs.  
Hub P/N 3783 Aluminum 4lbs. 11oz. w/ races and studs.

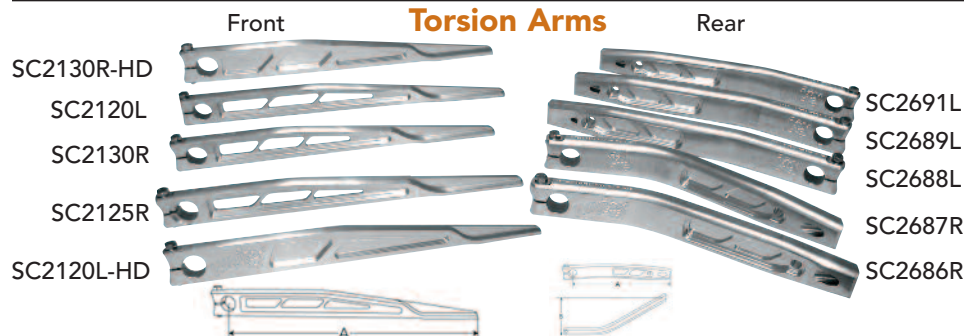


These hubs are machined from 2024-T3 forgings, others use 6061.



DESCRIPTION	QTY.	P/N
Hub, Right	(1)	WIN3783
Hub, Left (w/rotor mount)	(1)	WIN3783-01
Single Lip Seal (grease)	(2)	WIN7297V
Double Lip Seal (oil)	(2)	WIN7291V
Inner Bearing Cone	(2)	WIN8666
Inner Bearing Cup	(2)	WIN8635
Bolt	(10)	WIN8731
Nut	(10)	WIN8735
O'Ring	(2)	WIN8419
Screw In Hub Cap	(2)	WIN3749-01
Shim, must use w/ dble lip seal (.09)	(2)	WIN3748

### Torsion Arms



A	ANGLE	P/N
18-1/2"		WINS C2120L
18-1/2"		WINS C2120L-HD
16-3/4"	10°	WINS C2125R
16-3/4"		WINS C2130R

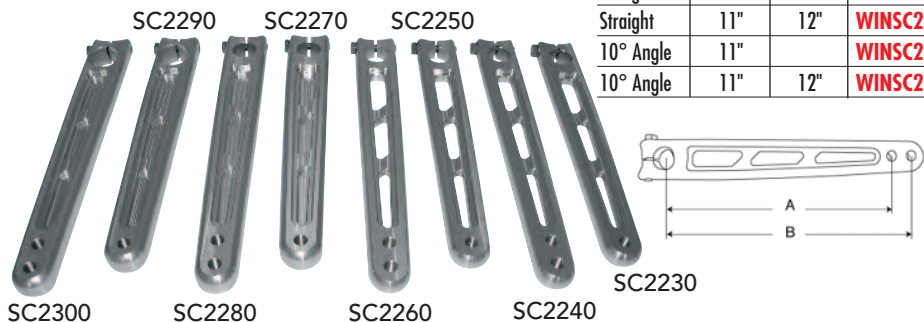
A	B	P/N
13-1/4"	4-1/2"	WINS C2686R
13-1/4"	5-1/4"	WINS C2687R
15"	2-1/2"	WINS C2688L
15"	3"	WINS C2689L
15"	3-1/4"	WINS C2691L

- Heavy Duty styles are for racers that "feel" the arms flex under load
- 10° Angle Broach makes wheel rate stiffer
- Contact patch under the arm is rounded to prevent premature arm wear
- Winters Rear Arms are solid from the bend to the back of the rear arm to help reduce flexing. Winters is the ONLY ONE to offer this feature
- Winters Rear Arms are the ONLY ONES to offer a light press fit on the shock bolt mounting area
- Most popular Right Rear Arm is SC2687R
- Most popular Left Rear Arm is SC2691L
- 100% Machined Surface

### Pitman Arms

- Broach "Straight" or Standard Arms
- 10° Broach Arms for shorter steering arm shaft, or for more header clearance
- Lightweight arms offer more protection for steering box
- The most popular style is SC2260
- 100% Machined

BROACH	A	B	P/N
Straight	11"		WINS C2230
Straight	11"	12"	WINS C2240
10° Angle	11"		WINS C2250
10° Angle	11"	12"	WINS C2260
Straight	11"		WINS C2270
Straight	11"	12"	WINS C2280
10° Angle	11"		WINS C2290
10° Angle	11"	12"	WINS C2300



# SPRINT/MICRO/MINI & ACCESSORIES

## MINISPRINT 2" SPLINED AXLE

Gun Drilled Aluminum 1-7/8" threaded ends  
2" Splines



**BRP2900**

48" Minisprint Axle (53" Overall)  
16" Spline on R.H. Thread Side  
10" Spline on L.H. Thread Side

## STEEL AXLES

1-1/4" Chrome Moly Keyed Axles



44" X 1-1/4" .250 Wall 4130 C.M. **BRP4097-44**

46" X 1-1/4" .250 Wall 4130 C.M. **BRP4097-46**

48" X 1-1/4" .250 Wall 4130 C.M. **BRP4097-48**

## ALUMINUM AXLE SPACERS



### Flat Aluminum Spacers

LENGTH	P/N
.250"	<b>BRP2909</b>
.500"	<b>BRP2909-1</b>
.625"	<b>BRP2909-2</b>
1.00"	<b>BRP2909-3</b>
1.50"	<b>BRP2909-5</b>
2.00"	<b>BRP2909-6</b>
2.50"	<b>BRP2909-7</b>
3.00"	<b>BRP2909-10</b>



**TAPERED CONE SPACER**  
**BRP2894**



**FEMALE TAPER TO  
FLAT SPACER**  
**BRP2908**

## REAR AXLE NUTS



**Hard Coated**  
**Use With BRP2908**

**1-7/8" RIGHT HAND AXLE NUT**  
**BRP2892**

**1-7/8" LEFT HAND AXLE NUT**  
**BRP2893**

## BEARING INSERTS



**ALUMINUM INSERT FOR  
BRP2910 BEARING**  
**BRP2905**

**DOUBLE ALUMINUM INSERT FOR  
BRP2910 BEARING**  
**BRP2907**

**SINGLE ALUMINUM BEARING  
INSERT FOR BRP2910-1  
BEARING**  
**BRP2906**

## BIRDCAGES



### Hench Style Birdcage

*Uses BRP2910 bearing (6011)*

**BEARING RETAINER PLATE**  
**BRP2941**



**CALIPER MOUNT(DLII) AND  
RETAINER PLATE**  
**BRP2946**



**BEARING RETAINER PLATE**  
**BRP2947**

### Bearings



**6011 BEARING FOR USE  
WITH BRP2941**  
**BRP2910**

**6211 BEARING FOR USE  
WITH BRP2906**  
**BRP2910-1**

**6010 BEARING**  
**BRP4124**

## SPROCKET HUBS



**6 ON 5-1/4" BOLT CIRCLE  
SPROCKET HUB (HENCH STYLE)**  
**BRP2935**

## PIN SPLINED HUBS



DESCRIPTION	P/N
4 on 4" Hub with 1/2" fine studs	<b>BRP2930</b>
Replacement 1/2" fine wheel stud	<b>BRP2932</b>
4 on 4" Hub with drive pins	<b>BRP2936</b>
4 on 4" Hub pressure plate	<b>BRP2936-1</b>
3/8 Nylock nut for replacement pin	<b>BRP2917</b>

# SPRINT/MICRO/MINI & ACCESSORIES

## TORSION STOPS



**7/8" Broach Aluminum Torsion Stop**

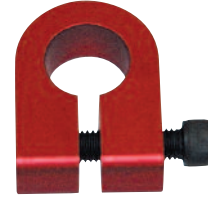
**BRP2962**



**3/4" Broach Aluminum Torsion Stop**

**BRP4172**

## WING SLIDER



**Aluminum Wing Slider**

Fits 1" Tubing **BRP4175**

## FRONT HUBS AND SPINDLES

### Front Hubs

Fits  
BRP2994  
Spindle



4 PIN ON 4" B.C. HUB WITH  
1/2" FINE STUDS

**BRP3006**

(Dust cap and bearings sold separately)



**DUST CAP FOR BRP3006 HUB**  
**BRP3007**

### Front Hub Bearings

For BRP3006 Hub

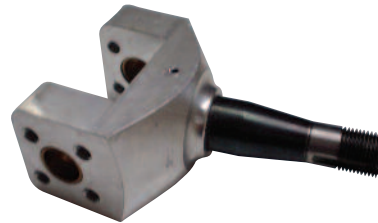


DESCRIPTION	P/N
Tapered roller outer bearing assembly	<b>BRP3000</b>
Inner race	<b>BRP2998</b>
Inner bearing with seal	<b>BRP2999</b>

### 7° Light Weight Aluminum Front Spindle - Steel Snout



DESCRIPTION	P/N
Front spindle	<b>BRP2990</b>
5/8" Kingpin	<b>BRP4155</b>
Replacement Bushing	<b>BRP4153</b>
Replacement Snout	<b>BRP2990S</b>
Castle Nut	<b>BRP4151</b>
Kingpin Shim 5/8" x .150"	<b>BRP4156</b>
Kingpin Shim 5/8" x .125"	<b>BRP4156-1</b>



### Aluminum Front Spindle

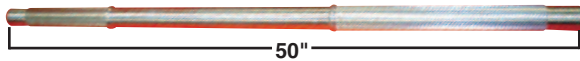
7° - 5/16" on 1" B.C. mounting holes

Fits  
BRP4146  
Hub

See Page 165

DESCRIPTION	P/N
Front spindle	<b>BRP2994</b>
11/16" kingpin	<b>BRP2996</b>
Replacement bushing	<b>BRP2991</b>
Replacement steel snout	<b>BRP2995</b>
Castle nut	<b>BRP4151</b>

## MICRO SPRINT AXLES



**1-3/4" Splined Aluminum Axles**

**BRP4102**

- 1-3/4" Spline • Gundrilled
- 50" Long
  - 18" R.H. Threaded spline length
  - 18" L.H. Threaded spline length
  - Right or left hand drive

## SPLINED AXLE KITS

### Rear Drive Axle Assembly

**BRP4102A**



### Assembly includes:

DESCRIPTION	QTY.	P/N
47" Aluminum splined axle	( 1 )	<b>BRP4102</b>
Splined hub with 4 - 1/2" F. studs	( 2 )	<b>BRP4106</b>
Bearing insert for BRP4124 BRG.	( 2 )	<b>BRP4115</b>
Splined rotor hub	( 1 )	<b>BRP4108</b>
Splined sprocket hub	( 1 )	<b>BRP4126</b>
1-5/8" R.H. Rear axle nut ( 15° taper )	( 1 )	<b>BRP4110</b>
1-5/8" L.H. Rear axle nut ( 15° taper )	( 1 )	<b>BRP4111</b>

Use BRP4102 axle & BRP spacers for universal fit.

# SPRINT/MICRO/MINI & ACCESSORIES

## MICROSPRINT REAR AXLE SPACERS

### Splined Aluminum Spacers



WIDTH	P/N
1/2"	BRP4114-1
1"	BRP4114-3
2"	BRP4114-6
2-1/2"	BRP4114-7

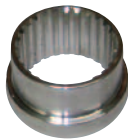
### Non-Splined Aluminum Spacers

WIDTH	P/N
1/8"	BRP4094
1/4"	BRP4094-1
3/8"	BRP4094-2
1/2"	BRP4094-3
3/4"	BRP4094-4
1"	BRP4094-5
1-1/2"	BRP4094-6
2"	BRP4094-7
2-1/2"	BRP4094-8
3"	BRP4094-9
3-1/4"	BRP4094-10
3-3/4"	BRP4094-11
4"	BRP4094-12
5"	BRP4094-13
6"	BRP4094-14

### Tapered Aluminum Spacers & Bearing Inserts



**SPLINED BEARING INSERT**  
BRP4115



**SPLINED BEARING INSERT FOR DOUBLE WIDE BEARING**  
BRP4116



**TAPER SPACER TO SEAT NUT**  
BRP4113



## SPLINED HUBS



**4 Stud Splined Hub With 1/2" Studs**

BRP4106



**4 Stud Splined Hub With 1/2" Studs**

BRP4105

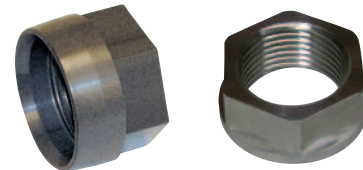
(For 30° Taper Nut)



**Splined RotorHub**  
(Use with BRP4177 & BRP4178 Rotor)

BRP4108

## MICRO AXLE NUTS



**R.H. AXLE NUT 15° (STALLARD)**  
BRP4110

(Use with BRP4113 Seat)

**L.H. AXLE NUT 15° (STALLARD)**  
BRP4111

(Use with BRP4113 Seat)

**R.H. AXLE NUT 30°**

BRP4110-1

**L.H. AXLE NUT 30°**

BRP4111-1

**R.H. FLAT END AXLE NUT (LAFLER)**

BRP4109

**L.H. FLAT END AXLE NUT (LAFLER)**

BRP4109-1

## MICRO SPROCKET HUBS



**Aluminum Splined Sprocket Hub**

BRP4126



**NEW PRODUCT**

**Aluminum Splined Sprocket Hub**

BRP4126-1

### MICRO SPRINT SPROCKET HUB

- 1.200" wide sprocket hub.
- 1-5/8" X 27 Internal Spline.
- Ultra Lightweight design- weighs just .9#.
- Machined from 6061 billet Aluminum.
- 6 on 5-1/4" bolt circle with 1/4" fine mounting holes for sprocket.

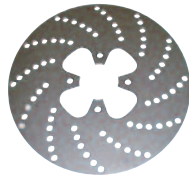
.200" wider than BRP4126

# SPRINT/MICRO/MINI & ACCESSORIES

## MICRO SPRINT ROTORS



BRP4177



BRP4178

## REAR KEYED AXLE HUBS



### 6 on 5-1/4" Sprocket Hubs

1-1/4" Split Sprocket Hub	BRP4128
1-3/8" Split Sprocket Hub	BRP4129



### 4 on 4" Wheel Hubs

1-1/4" Split Hub with 1/2" Fine Studs	BRP4134
1-3/8" Split Hub with 1/2" Fine Studs	BRP4135
1-1/2" Split Hub for Acro Rear	BRP4136

DESCRIPTION	DIAMETER	WIDTH	MATERIAL	P/N
4 Bolt- 4 on 3"	8"	3/16"	Steel	BRP4177
4 Bolt- 4 on 3"	9-1/2"	3/16"	Drilled Steel	BRP4178

## 1-1/4" REAR KEYED STEEL AXLES



**.250 Wall - 4130  
Chrome Moly**  
Stocked in 44", 46" and 48"  
BRP4097 - (Length)

## TORSION STOPS

### Aluminum Torsion Stops



**7/8" BROACH ALUMINUM  
TORSION STOP**  
BRP2962

**3/4" BROACH ALUMINUM  
TORSION STOP**  
BRP4172

## TORSION ARMS



### 3/4" Broach

DESCRIPTION	P/N
1/2" Left front torsion arm	BRP4166
1/2" Right front torsion arm	BRP4167
5/8" Blank front torsion arm	BRP4170
1/2" Thick x 15-1/2" long blank arm	BRP4164

### 7/8" Broach

DESCRIPTION	P/N
5/8" thick x 15-1/2" blank arm	BRP4165-1

## DIRECT MOUNT WHEEL CENTERS



**Front Aluminum Hub**  
Fits BRP4152HD spindle  
BRP4144



**Front Aluminum Hub**  
Fits BRP4191 spindle  
BRP4189



**Splined Aluminum Hub**  
Fits all micro splined rear axles  
BRP4131

# SPRINT/MICRO/MINI & ACCESSORIES

## FRONT MICRO AXLES



Use with BRP4152HD Spindle  
**AXLE EYE**  
**BRP4162E**

DESCRIPTION	P/N
10° front coil over axle	<b>BRP4161</b>
10° front torsion arm axle	<b>BRP4162</b>

Also available with 7° ends



Use with  
**BRP4146 hub**  
 Pin and shim sold separately



**Spindle Assembly**  
 King pin and shim sold separately  
**BRP4191**  
 Uses BRP4188 Hub

DESCRIPTION	P/N
10° Alum. Spindle w/ steel snout	<b>BRP4152HD</b>
5/8" x 3.650" Steel kingpin (sold separately)	<b>BRP4155</b>
Replacement king pin bushing (each)	<b>BRP4153</b>
Replacement steel snout	<b>BRP4154</b>
Spindle castle nut	<b>BRP4151</b>
.150" Thick shim	<b>BRP4156</b>
.125" Thick shim	<b>BRP4156-1</b>

DESCRIPTION	P/N
5/8" King pin x 3.850	<b>BRP4194</b>
.150" King pin shim	<b>BRP4156</b>
.125" Thick shim	<b>BRP4156-1</b>
Spindle snout	<b>BRP4192</b>
Repl. bushings	<b>BRP4153</b>
Spindle nut	<b>BOL163F</b>
Snap ring	<b>BRP4193</b>
Axle eye	<b>BRP4163</b>



### Aluminum Steering Arms

DESCRIPTION	P/N
Left front steering arm	<b>BRP4158</b>
Right front steering arm	<b>BRP4159</b>



**Aluminum Steering Arms**  
**LONG STEERING ARM**  
 FOR BRP4191  
**BRP4196**

**SHORT STEERING ARM**  
 FOR BRP4191  
**BRP4195**

## FRONT HUB

For BRP4152HD & BRP2994 Spindle



**4 on 4" Hub With 1/2" Fine Studs**  
 Fits BRP4152HD spindle.  
**BRP4146**



**Hub Assembly with Studs, Nuts and Bearings**  
 For BRP4191 spindle  
**BRP4188**

DESCRIPTION	P/N
Replacement bearing (2 req.)	<b>BRP4148</b>
Replacement stud (4 req.)	<b>BRP4190</b>
1/2" C. narrow nylock	<b>BOL083C</b>
1/2" F. flange whiz nut	<b>BRP4150</b>



**1/2" Fine 'Whiz' Nut**  
**BRP4150**

## FRONT HUB KIT

For BRP4152HD & BRP2994 Spindle



**Front Hub Kit**  
 Complete with hub, inner & outer bearing and dust cover  
**BRP4145**

Kit contains the following:

QTY.	DESCRIPTION	P/N
1	Hub	<b>BRP4146</b>
1	Inner bearing	<b>BRP4148</b>
1	Outer bearing	<b>BRP4149</b>
1	Dust cap	<b>BRP3007</b>