

PIT & SAFETY EQUIPMENT & ACCESSORIES

RJS DRIVING SUITS



RJS PROBAN ONE PIECE SINGLE LAYER

Black	RJS1004
Blue	RJS1004-3
Red	RJS1004-4

Add size to the end of Part #
(EX. RJS1004M)

Available in sizes: XS, S, M, L, XL, XXL.
Custom suits can be special ordered.

NOMEX UNDERGARMENTS



SLIT STYLE OPEN NOMEX HOOD RJS20205

FULL FACE OPEN NOMEX HOOD RJS20215

NOMEX SOCKS

Small	RJS20204S
Medium	RJS20204M
Large	RJS20204L
X-Large	RJS20204XL

NOMEX UNDERWEAR 2 PIECE STYLE

Small	RJS20203S
Medium	RJS20203M
Large	RJS20203L
X-Large	RJS20203XL

NECK BRACES



NECK BRACES

Black	RJS20216
Blue	RJS20216-3
Red	RJS20216-4



360° NECK BRACES

Black	RJS20216-1
Blue	RJS20216-1-3
Red	RJS20216-1-4



CHILDS NECK COLLAR BRK95-9550

NOMEX DRIVING GLOVES



DOUBLE LAYER

Black	RJS20212
Blue	RJS20212-3
Red	RJS20212-4

SINGLE LAYER

Black	RJS20213
Blue	RJS20213-3
Red	RJS20213-4

Add size to the end of Part # (ex RJS20213M)
Available in small, medium, large, & X-large

RESTRAINTS

ARM RESTRAINT RJS50522

HELMET RESTRAINT RJS20214



NOMEX SHOES



RJS NOMEX ANKLE TOP SHOES RJS20209-SIZE

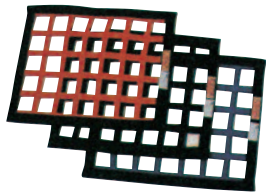
Available in full sizes from 8 to 13

Full sizes only specify red, black, or blue

PIT & SAFETY EQUIPMENT & ACCESSORIES

WINDOW NETS

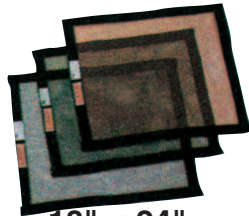
Ribbon Nets



18" x 24"

Black	RJS50525
Blue	RJS50525-3
Red	RJS50525-4

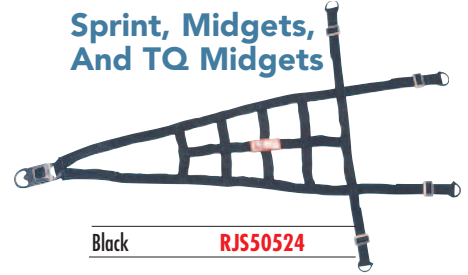
Mesh Net



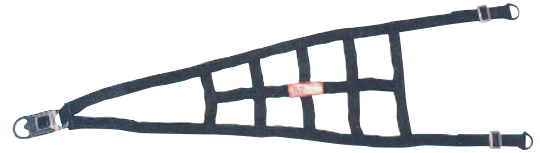
18" x 24"

Black	RJS50525MN
Blue	RJS50525-3MN
Red	RJS50525-4MN

Sprint, Midgets, And TQ Midgets



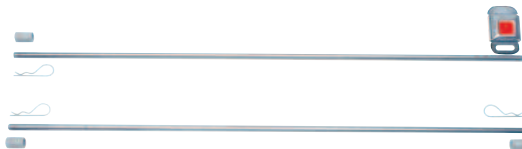
Black **RJS50524**



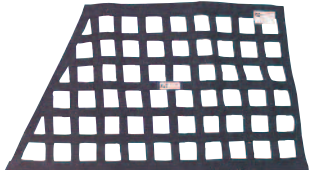
Black **RJS50524-1**



WINDOW NET BAR
BRP5089



NET INSTALLATION KIT
RJS90906



OBLONG WINDOW NET
Black **RJS50523**

ROLL BAR PADDING

Standard

1-1/2" TUBING - 3' LENGTHS

Black	BRPBLACK
Blue	BRPBLUE
Red	BRPRED
Yellow	BRPYELLOW
Orange	BRPORANGE
Purple	BRPPURPLE
Gray	BRPGRAY



Hi Density SFI 45.1

1-3/4" TUBING - 3' LENGTHS

Black	KIR99031
Red	KIR99032
Blue	KIR99033

1" TUBING - 3' LENGTHS

Black	KIR99021
Red	KIR99022
Blue	KIR99023

Has self adhesive strip

MUDD-OFF



Quart of 1:12
Concentrate

MUD11022

SAFECRAFT FIRE SYSTEMS

5 lb. Kit



10 lb. Kit



DESCRIPTION	P/N
5 lb. Halon system	SAFLT5-AAA
10 lb. Halon system	SAFLT10-AAA
4 Foot push cable	SAF55-1224-48
5 lb. charged spare cylinder for LT system	SAF56-1441
10 lb. charged spare cylinder for LT system	SAF56-1442
10' of aluminum tubing	SAF54-2001

PIT & SAFETY EQUIPMENT & ACCESSORIES

UNIVERSAL TIE-DOWNS



RJS30307

SAFETY WIRE AND TWISTERS



TWISTERS
AFC80745

360' OF WIRE
AFC80746

RINGERS RESOURCE GLOVES



Driver X Gloves

BLACK

Medium	RIN233-09
Large	RIN233-10
X-Large	RIN233-11

BLUE

Medium	RIN231-09
Large	RIN231-10
X-Large	RIN231-11

RED

Medium	RIN235-09
Large	RIN235-10
X-Large	RIN235-11

Knee Pads

STANDARD
RIN553-00



Heat Sleeve

RIN503-00



MECHANIX WEAR

Gloves



BLUE

Small	MECMG-03-008
Medium	MECMG-03-009
Large	MECMG-03-010
X-Large	MECMG-03-011
XX-Large	MECMG-03-012

BLACK

X-Small	MECMG-05-007
Small	MECMG-05-008
Medium	MECMG-05-009
Large	MECMG-05-010
X-Large	MECMG-05-011
XX-Large	MECMG-05-012

RED

Small	MECMG-02-008
Medium	MECMG-02-009
Large	MECMG-02-010
X-Large	MECMG-02-011
XX-Large	MECMG-02-012

Apron

MECMG-05-600



PIT & SAFETY EQUIPMENT & ACCESSORIES

SIMPSON HELMETS

Voyager

NOMEX

--- SIZE --- COLOR

EXAMPLE PART # **SIM110031**

*Voyager, white, large
Available S, M, L, XL*



Voyager SideWinder

NOMEX

--- SIZE --- COLOR

EXAMPLE PART # **SIM1127001**

Voyager Sidewinder, size 7, white



Helmet Skirt

RJS90904



SIMPSON SHIELDS



SIM88304



SIM89401



SIM89200

VOYAGER & VOYAGER SIDEWINDER

Clear Shield	SIM88300
Smoke Shield	SIM88301
Amber Shield	SIM88304
Pivot Kit	SIM99022

OLD VOYAGER & VOYAGER SIDEWINDER

Clear Shield	SIM88200
Smoke Shield	SIM88201
Amber Shield	SIM88204
Pivot Kit	SIM99022

BANDIT & SUPER BANDIT

Clear Shield	SIM89400
Smoke Shield	SIM89401
Pivot Kit	SIM99002

RX

Clear Shield	SIM89200
Smoke Shield	SIM89201
Amber Shield	SIM89204
Pivot Kit	SIM99001

SUPER SHARK

Clear Shield	SIM88600
Smoke Shield	SIM88601
Amber Shield	SIM88603
Pivot Kit	SIM99002

IMPACT HELMETS AND SHIELDS ARE AVAILABLE

BELL REPLACEMENT SHIELDS



Replacement Pivot Kit

BEL1033

PART # BEL256A .080"
FITS: RACESTAR III, SPORT, KARTPRO

Clear **BEL1061**

PART # BEL276B .080"
FITS: RACESTAR IV

Clear **BEL1078**

PART # BEL280A .125"
FITS: M2 EC, AIR EXTRACTION,
SPORT II FORCED AIR EC

Clear **BEL1085**

Light smoke **BEL1094**

Dark smoke **BEL1086**

PART # BEL280B .125"

FITS: RACESTAR III

Clear **BEL1095**

Light smoke **BEL1100**

Dark smoke **BEL1096**

PART # BEL253B .125"
FITS: M2, SPORT II FORCED AIR

Clear **BEL1055**

PART # BEL281 .125"
FITS: ALL VORTEX EC, M3 EC, SPORT II EC,
AFX-1 EC, XFM-1 EC, RACESTAR IV EC

Clear **BEL1102**

Light Smoke **BEL1111**

Dark smoke **BEL1103**

PIT & SAFETY EQUIPMENT & ACCESSORIES



PARKER SYSTEM

For Sidewinder Helmets

DESCRIPTION	P/N
44" Hose 1-1/4" inlet & outlet	PARHOSE
Pump	PARPUMP
Replacement filter	PARFILTER

TEAR-OFFS

Ultra-Shield

- 10 resealable bags of 20 tearoffs per box
- 2 mil thick

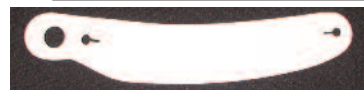


CARD OF 12 PACKAGES OF REPLACEMENT BUTTON KITS
ULT1912B

1 REPLACEMENT BUTTON KIT WITH SCREWS (2 BUTTONS)
ULT1091B



SIMPSON VOYAGER STRAIGHT 11-1/2" BUTTON CENTER
ULT1201C



BELL M-1 BANANA 12-3/8" BUTTON CENTER
ULT1202C



SIMPSON SX CURVED 11-1/2" BUTTON CENTER
ULT1203C



SIMPSON RX 11-1/2" BUTTON CENTERS
ULT1204C



SIMPSON BANDIT STRAIGHT 12" BUTTON CENTER
ULT1208C



SHARK & SUPER SHARK 12-3/4" BUTTON CENTERS
ULT1209C



IMPACT VAPOR/CHARGER 11-3/4" BUTTON CENTERS
ULT1214C



IMPACT CHAMP 11-3/4" BUTTON CENTERS
ULT1215C

PREMIUM TEAR-OFFS



Smoke



Amber



Clear

- 7 laminated layers have the same visibility as 1 traditional tear-off
- Stackable up to 35 tear-offs
- Eliminates fog, dirt and dust between layers
- Installs as one piece

Clear

FITS	P/N
Simpson Voyager	RO 7201C
All Bell	RO 7202C
Simpson SX	RO 7203C
Simpson RX, SB	RO 7204C
Shark & S. Shark	RO 7209C
Bieffe & Zamp	RO 7215C
Impact Vapor/Charger	RO 7230C
Impact Champ/Nitro	RO 7231C

Amberstack - 1 amber & 6 clear

FITS	P/N
Simpson Voyager	RO 7201A
All Bell	RO 7202A
Simpson RX, Super Bandit	RO 7204A
Shark & S. Shark	RO 7209A

Smokestack - 3 smoke & 4 clear

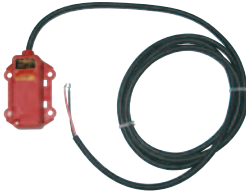
FITS	P/N
Simpson Voyager	RO 7201S
All Bell	RO 7202S
Simpson RX, Super Bandit	RO 7204S
Shark & S. Shark	RO 7209S

PIT & SAFETY EQUIPMENT & ACCESSORIES

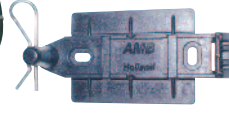
TRANSPONDERS



AMBX260



AMBX260D



AMB2502



AMB2504

DESCRIPTION	P/N
Transponder	AMBX260
Transponder Direct Wire	AMBX260D
Old Style Holder	AMB2502
New Style Holder	AMB2504
Charger kit	AMB2423
Charger Holder	AMBX3

RADIO RECEIVERS

DESCRIPTION	P/N
Radio Receiver	RAC1600
Drivers Earpiece	RACDEP
Replacement Foam	RACDEPF
Replacement Foam For EB	RACEPF
Radio Receiver with splitter	RACACE



The receiver includes a clip, and batteries. Order earpiece separately.

RAC1600

VEGA SNELL 2000 HELMETS

Available in black or white only



Black **BRK95-14 (SIZE)**

White **BRK95-13 (SIZE)**



Zamp is proud of their FS-1 helmet which offers a greater fit and is the best value in the helmet market.

Features Include:

- Lightweight fiberglass shell
- Clear coated water decal graphics
- Fully ventilated - adjustable scalp & chin vents with aerodynamic rear exhaust
- Plush moisture absorbent washable/ removable snap-in- interior
- Tool-less shield with positive ratcheting system
- D-ring fastener
- Meets or exceeds Snell 2000 & DOT
- Available in size XS through XXL
- Available in black or white only

VEGA SHIELDS

DESCRIPTION	P/N
Clear	BRK95-9530
Mirror	ZHZ1SM
Smoke	BRK95-9531
Shield Retainer	ZHZ103

Due to the varying shapes, heads that are apparently the same size when measured by tape may not necessarily fit the same size helmet.

CONVERSION CHART

INCHES	SIZE	DESCRIPTION	METRIC
21-1/4"	6-3/4	X-Small	54
21-5/8"	6-7/8	Small	55
22"	7	Small	56
22-3/8"	7-1/8	Medium	57
22-3/4"	7-1/4	Medium	58
23-1/8"	7-3/8	Large	59
23-1/2"	7-1/2	Large	60
23-7/8"	7-5/8	X-Large	61
24-1/4"	7-3/4	X-Large	62

HELMET FRESH



Kills bacteria and mildew which cause helmet odor

4 oz spray bottle

BRK95-9540

PLEXUS



Plastic Cleaner

Large 13 oz. Can **PLE13**

PAULSON GOGGLES



TINT	P/N
Clear	PAU105
Lt. Amber	PAU105LA
Smoke	PAU105S

SCALES



FEATURES Custom Displays: Total Display, Percentage Display, Dirt Track & Total Weight

Intercomp SW500

INT170125

Large Easy to Read Display of Weights & Percentages

Best Features In Class

- 15" X 15" Billet Pads
- 1,500 lb (700 kg) Pad Capacity
- 6,000 lb (2,800 kg) System Capacity
- Certified to 0.1% Accuracy
- Giant 1/2" Display Characters
- Backlit Display
- Standard 9-volt Battery Operation
- 2.5 inch Low Profile Pads
- Military Grade Cables & Connections

SPECS	INTERCOMP	BRAND X
Scale Pad Construction	Billet Aluminum	Cast Aluminum
Flatness	0.015	0.050
Certified Calibration	1%*	None
Military Spec Connector	Yes	No
Heavy Duty Cabling	Yes	No
Battery	9V	Custom
Warranty	Full 2-Year	Limited

* Calibration sheet available upon request

**REPLACEMENT CAP
PART # JAZ340-400-04**



5 Gal. Jug

JAZ710-005-06

- Jaz jugs are guaranteed not to rust, crack or break
- 83mm spout for fast and easy pouring
- DOT approved

FUEL JUGS AND FUNNELS



Funnel Filter

JAZ500-000-01

- Stainless steel screen
- Removes easily for cleaning
- Seals with an O-ring



14" Triangle Funnel

JAZ550-014-06

- Allows easy filling against bulkhead from any side
- Anti-splash ring
- Resizable spout

STOPWATCHES



Economy

ROBSC-501

- Records individual lap times
- Records accumulated split times



Dual Split w/ MPH

ROBSC-554

- Displays lap speed time and number up to 999 mph for 25 hours or 999 laps and more



Deluxe 2 Car Timing Board

Dual Split with M.P.H.

BRP5146

PIT & SAFETY EQUIPMENT & ACCESSORIES

RJS BELT / HARNESS KITS

Individual Wrap Arouds

COLOR	P/N
Black	RJS02-19-06
Blue	RJS02-19-06-3
Red	RJS02-19-06-4

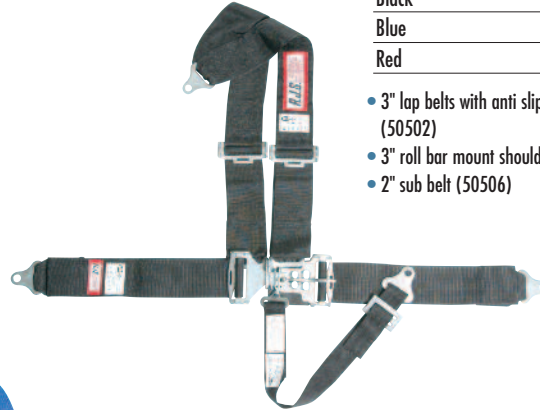
- 3" lap belts with anti slip springs installed (50502)
- 3" wrap around shoulder harness (50519)
- 2" sub belt (50506)



Roll Bar Bolt End

COLOR	P/N
Black	RJS02-16-06
Blue	RJS02-16-06-3
Red	RJS02-16-06-4

- 3" lap belts with anti slip springs installed (50502)
- 3" roll bar mount shoulder harness (50516)
- 2" sub belt (50506)



Individual Bolt Ends

COLOR	P/N
Black	RJS02-18-06
Blue	RJS02-18-06-3
Red	RJS02-18-06-4

- 3" lap belts with anti slip springs installed (50502)
- 3" roll bar mount shoulder harness (50518)
- 2" sub belt (50506)

RJS LAP BELT



3" Lap Belts With Anti Slip Springs Installed

COLOR	P/N
Black	RJS50502
Blue	RJS50502-3
Red	RJS50502-4

RJS SUB BELT



2" SUB BELTS

Black	RJS50506
Blue	RJS50506-3
Red	RJS50506-4

3" SUB BELTS

Black	RJS20223
-------	-----------------

LEAF BELT/HARNESS KITS



Floor Mount Harness Bolt Kit

Snap End

RJS30309

HARNESS PAD



Black Shoulder Harness Pads

Set of 2

RJS70702