

## STEERING QUICK RELEASES

### Lightweight Aluminum

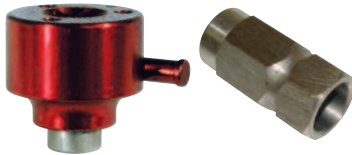


Red or Gold Anodized

DESCRIPTION	P/N
Complete 5/8" weld on assembly (red)	<b>BRP191*</b>
Complete 3/4" weld on assembly (red)	<b>BRP192</b>
Complete splined assembly Profile, Niels or Lee Power Steering box (red)	<b>BRP193</b>
Quick Release hub only (red)	<b>BRP194*</b>
5/8" weld on shaft only	<b>BRP195</b>
3/4" weld on shaft only	<b>BRP196</b>
Steering - splined shaft only	<b>BRP184</b>

\* Add "G" to the end of the part number for gold anodized

### Standard Aluminum



Red Anodized

DESCRIPTION	P/N
Complete 5/8" weld on assembly (red)	<b>BRP186</b>
Complete 3/4" weld on assembly (red)	<b>BRP188</b>
Complete splined assembly Profile, Niels or Lee Steering box (red)	<b>BRP190</b>
5/8" weld on shaft only	<b>BRP180</b>
3/4" weld on shaft only	<b>BRP182</b>
Steering - splined shaft only	<b>BRP184</b>
QR Hub only (red)	<b>BRP185</b>

### Aluminum or Steel Rim Type

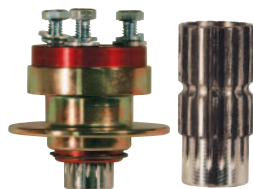


Aluminum is red or gold plated- steel is zinc plated

DESCRIPTION	ALUM P/N	STEEL P/N
5/8" assembly	<b>BRP177*</b>	
3/4" assembly	<b>BRP178*</b>	<b>BRP178S</b>
Splined assembly for Profile, Niels or Lee Steering boxes	<b>BRP179*</b>	
5/8" shaft only	<b>BRP173</b>	<b>BRP173</b>
3/4" shaft only	<b>BRP174</b>	<b>BRP174</b>
Splined shaft only Profile Style Hex Shaft	<b>BRP175</b>	<b>BRP175</b>
Hub only	<b>BRP176*</b>	<b>BRP176S</b>

\* Add "G" to the end of the part number for gold anodized

### Aluminum Body - Steel Rim - External Spline - Rim Type



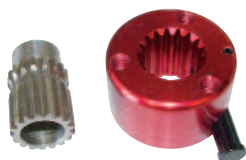
DESCRIPTION	P/N
Complete 5/8" weld on assembly	<b>BRP167</b>
Complete 3/4" weld on assembly	<b>BRP168</b>
Complete assembly for Profile, Niels or Lee Steering boxes	<b>BRP169</b>
Profile, Niels, Lee splined shaft only	<b>BRP163</b>
5/8" weld on shaft only	<b>BRP164</b>
3/4" weld on shaft only	<b>BRP165</b>
Body without shaft	<b>BRP166</b>

### Aluminum Body - Aluminum Rim - External Spline - Rim Type



DESCRIPTION	P/N
Complete 5/8" assembly	<b>BRP2127</b>
Complete 3/4" assembly	<b>BRP2128</b>
Complete assembly for Niels/Profile/Lee boxes	<b>BRP2129</b>
Quick release hub only	<b>BRP2121</b>
5/8" weld on shaft	<b>BRP164</b>
3/4" weld on shaft	<b>BRP165</b>
Niels/Profile/Lee Shaft only	<b>BRP163</b>

### Lightweight Aluminum - External Spline - Pin Style



DESCRIPTION	P/N
Complete 5/8" assembly	<b>BRP2137</b>
Complete 3/4" assembly	<b>BRP2138</b>
Quick release hub only	<b>BRP2131</b>
5/8" weld on shaft only	<b>BRP2133</b>
3/4" weld on shaft only	<b>BRP2134</b>

## STEERING QUICK RELEASES

### Aluminum Body - Aluminum Rim - Internal Spline - Rim Type



DESCRIPTION	P/N
Complete 5/8" assembly (red)	<b>BRP160</b>
Complete 5/8" assembly (black)	<b>BRP160BK</b>
Complete 3/4" assembly (red)	<b>BRP161</b>
Complete 3/4" assembly (black)	<b>BRP161BK</b>
Complete assembly for stg boxes (red)	<b>BRP162</b>
Complete assembly for stg boxes (black)	<b>BRP162BK</b>
5/8" weld on shaft only	<b>BRP160-1</b>
3/4" weld on shaft only	<b>BRP161-1</b>
Stg box shaft only	<b>BRP162-1</b>
Quick release hub only	<b>BRP159</b>

- Features the new push lock quick release system
- No need to pull up on the rim to install
- Just push the wheel on and the quick release automatically locks

## STEERING WHEELS



### Rebco Aluminum Steering Wheels

DESCRIPTION	P/N
15" Dish aluminum wheel	<b>REB270-8645</b>
17" Dish aluminum wheel	<b>REB270-8655</b>

### Sweet Aluminum Steering Wheels



DESCRIPTION	P/N
13" Flat aluminum wheel	<b>SWE601-70131</b>
13" Dish aluminum wheel	<b>SWE601-70132</b>
15" Flat aluminum wheel	<b>SWE601-70151</b>
15" Dish aluminum wheel	<b>SWE601-70152</b>
17" Flat aluminum wheel	<b>SWE601-70171</b>
17" Dish aluminum wheel	<b>SWE601-70172</b>



### Longacre Steel Dish Steering Wheels

DESCRIPTION	P/N
15" Dish steel wheel	<b>LON56841</b>
17" Dish steel wheel	<b>LON56851</b>



### Economy Steel Go Kart Steering Wheels

- Weighs 2-1/2 lbs.

12" **BRP4364**



### Ultra Lightweight Aluminum Go Kart Wheel

- Weighs less than 1 lb.

12" **BRP4363**

14" **BRP4601**



### Top Gun Go Kart Wheel

- Weighs less than 1 lbs.

13-1/2" **BRP4362**

## KIRKEY STEERING WHEEL CENTER PADS

### Post Pad



- 6" Diameter
- 2" Thick foam w/vinyl covering
- Velcro loops attach to wheel spokes (3 spokes)



### Sprint Pad

DESCRIPTION	P/N
Black 3 Post Pad	<b>KIRO0001</b>
Red 3 Post Pad	<b>KIRO0002</b>
Royal Blue 3 Post Pad	<b>KIRO0003</b>
Black Sprint Pad	<b>KIRO0021</b>
Red Sprint Pad	<b>KIRO0022</b>
Blue Sprint Pad	<b>KIRO0023</b>

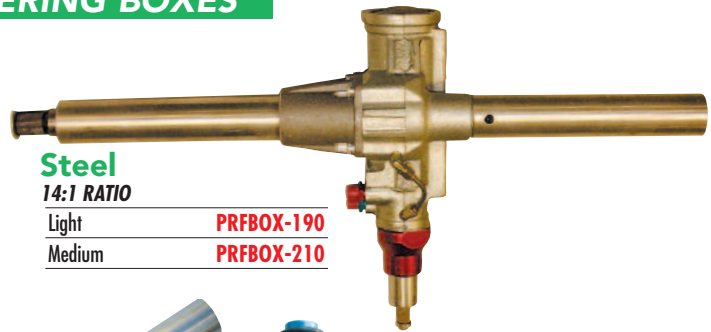
# STEERING & ACCESSORIES

## PROFILE STEERING BOXES

**Aluminum**  
12:1 RATIO  
190 SPOOL VALVE  
**PRFPRO**



**Steel**  
14:1 RATIO  
Light **PRFBOX-190**  
Medium **PRFBOX-210**

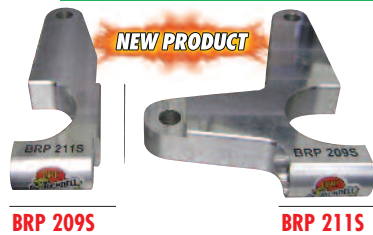


### Profile Rebuild Parts

DESCRIPTION	P/N
Seal Kit	<b>PRFKIT</b>
Right Side Tube for steering box	<b>BRPPROFILE</b>
Pressure Fitting (can use AFC37125)	<b>PRF15</b>
Return Fitting (can use AFC37124)	<b>PRF16</b>

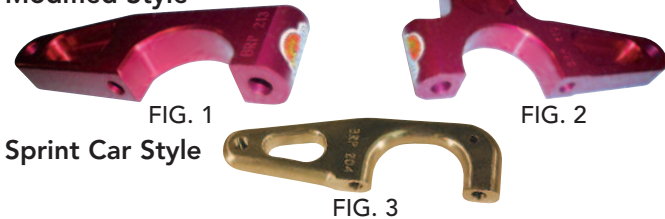


## ALUMINUM STEERING ARMS



- MACHINED FROM 6061 aluminum
- Plain unanodized finish.
- Designed for cars where strength is more critical than weight.
- Direct replacement for BRP 209 and BRP 211 steering arms.

### Modified Style



### Sprint Car Style

FIG.	DESCRIPTION	P/N
1	Ford lower arm	<b>BRP211</b>
1	Ford lower arm (black anodized)	<b>BRP211BK</b>
1	Ford lower arm (no pocketing)	<b>BRP211S</b>
1	Ford lower arm (front mount caliper)	<b>BRP213</b>
1	International lower arm	<b>BRP212</b>
2	International combination arm	<b>BRP208</b>
2	Ford combination arm	<b>BRP209</b>
2	Ford combination arm (black anodized)	<b>BRP209BK</b>
2	Ford combination arm (no pocketing)	<b>BRP209S</b>
2	Ford combination arm (front mount caliper)	<b>BRP210</b>
3	Ford single (sprint car)	<b>BRP206</b>

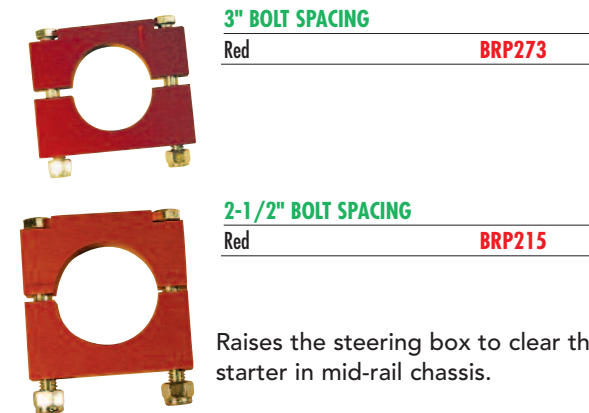
## STEERING BOX MOUNTS

### Center Steering Hanger

DESCRIPTION	P/N
Red hanger assembly	<b>BRP274</b>
Replacement red strap (each)	<b>BRP274-2</b>



### Steering Box Side Mount



3" BOLT SPACING	P/N
Red	<b>BRP273</b>

2-1/2" BOLT SPACING	P/N
Red	<b>BRP215</b>

Raises the steering box to clear the starter in mid-rail chassis.

## ALUMINUM PITMAN ARMS



DESCRIPTION	P/N
Red anodized arm with milling, made from 6061 aluminum (holes at 11", 12" and 13")	<b>BRP220</b>
Red anodized arm with milling, made from 2024T3 aluminum (strong) (holes at 11", 12" and 13")	<b>BRP221</b>
Red anodized arm without ballnose milling (holes at 11", 12" and 13")	<b>BRP220-1</b>
Red anodized arm with milling for 9:1 ratio steering box (holes at 9" and 10")	<b>BRP227</b>



- This Pitman Arm is designed for 9:1 ratio steering boxes.
- Has 9" and 10" center to center holes for adjustability.
- Drag Link mounting holes are drilled to 1/2" diameter.
- Heavy duty grade 8 locking bolt.
- Made from super strong 2024 Aluminum for ultimate durability.
- Weighs just 1.65#.
- Red Anodized finish.

# STEERING & ACCESSORIES

## UNIVERSAL JOINTS AND COUPLERS



U-JOINT



COUPLER

APPLICATION	DESCRIPTION		U-JOINT P/N	COUPLER P/N
	SPLINE	TO SPLINE		
Smooth Spline	3/4" Smooth	3/4" Smooth	<b>SWE401-50606</b>	
Stiletto Rack (.620)	3/4" Smooth	5/8" 36 Spline	<b>SWE401-50607</b>	
Smooth Spline	3/4" Smooth	5/8" Smooth	<b>SWE401-50608</b>	
Sweet Spline / Sweet Rack	3/4" Smooth	3/4" 48 Spline	<b>SWE401-50610</b>	<b>SWE301-30100</b>
Chevy Power / Sweet Stg. Box	3/4" Smooth	13/16" 36 Spline	<b>SWE401-50611</b>	<b>SWE301-30110</b>
Chevy Man / Pinto Power / Howe	3/4" Smooth	3/4" 36 Spline	<b>SWE401-50612</b>	<b>SWE301-30120</b>
Pinto Manual	3/4" Smooth	9/16" 26 Spline	<b>SWE401-50613</b>	<b>SWE301-30130</b>
Vega Spline (.600)	3/4" Smooth	5/8" 36 Spline	<b>SWE401-50614</b>	
New Chevy Power /Appleton	3/4" Smooth	3/4" 30 Spline	<b>SWE401-50615</b>	<b>SWE301-30150</b>
Chevy Column	3/4" Smooth	1" 48 Spline	<b>SWE401-50618</b>	
Double D	3/4" Smooth	3/4" Double D	<b>SWE401-50619</b>	
Smooth Spline	5/8" Smooth	5/8" Smooth	<b>SWE401-50808</b>	

## STEERING ROD ENDS & SUPPORT BEARINGS



### .007" Oversized

Rod ends will slide on 3/4" shaft

Steel	<b>AFC10400</b>
Steel Jam Nuts	<b>BRP788</b>
Aluminum Jam Nuts	<b>BRP772</b>



### Firewall/Mid-plate Support Bearing

.757" Bearing	<b>AFC30321</b>
---------------	-----------------



### 5/8" x 5/8" W/Grease Fitting

R.H. Thread	<b>AFC10402</b>
L.H. Thread	<b>AFC10401</b>

## STEERING SHAFT MOUNTS

12 Gauge Steel

### 10" Steering Shaft Mounts



**ALL52126**

### 11" Steering Shaft Mounts



**BRP5108**

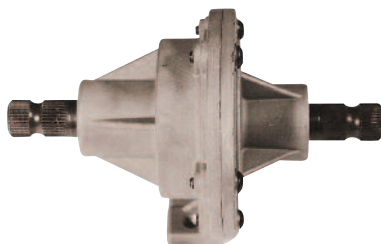
## STEERING SHAFT TUBING

### 3/4" x .120 Wall Steel DOM

18 inch shaft	<b>BRP197</b>
36 inch shaft	<b>BRP198</b>
48 inch shaft	<b>BRP199</b>
72 inch shaft	<b>BRP199-1</b>



## STEERING QUICKENERS



1.5 : 1 RATIO  
**HOW5220**

2 : 1 RATIO  
**HOW522B2**  
(Power Steering Only)

Both Shafts are 3/4" x 36 Spline

## STEERING SHAFT COLLARS

Aluminum collar mounts on steering shaft with set screw and keeps shaft from sliding in support bearings.

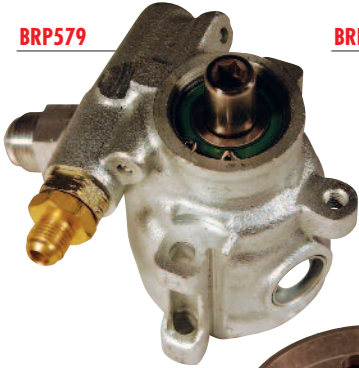


5/8" Shaft Collar	<b>BRP181A</b>
3/4" Shaft Collar	<b>BRP181-1A</b>

# STEERING & ACCESSORIES

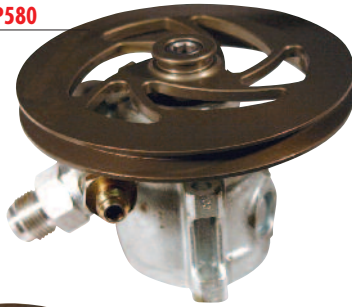
## POWER STEERING PUMPS

BRP579



1200 PSI

BRP580



BRP581



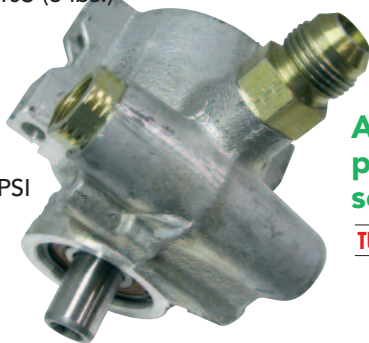
IT IS HIGHLY RECOMMENDED THAT A FILTER BE USED ON THE INLET LINE OF THE PUMP

DESCRIPTION	P/N	REPLACEMENT PULLEY
Power Steering pump only (3.15 lbs.)	BRP579	N/A
Power Steering pump with 6" v-pulley ( 1/2" belt )	BRP580	BRP996
Power Steering pump with 6" v-pulley ( 3/8" belt )	BRP580-1	BRP996-1
Power Steering pump w/4.25" serp pulley	BRP581	BRP951

## Aluminum Power Steering Pumps

Aluminum Power Steering Pump Only  
TUR40S (3 lbs.)

1500 PSI



TUR40S

Aluminum P/S pump with a serpentine pulley

TUR581

## POWER STEERING FLUID

SWEET POWER STEERING FLUID

( 1 qt. )

SWE301-30090



## POWER STEERING FITTINGS

GM POWER STEERING FITTINGS - '80 & UP

Small 16mm x 1.50

AFC37122

Large 18mm x 1.50

AFC37123

W/ O-RING

GM POWER STEERING FITTINGS - UP TO '79

Small 5/8" x 18 TPI

AFC37124

Large 11/16" x 16 TPI

AFC37125



## Replacement Fittings

DESCRIPTION	P/N
AN9 O-ring to AN10 taper	BRP5026
AN9 O-ring to 3/8" NPT female	BRP5027
3/8" NPT female to AN10 taper	XRP981611
AN6 pressure outlet	AFC37130



BRP5026



BRP5027



XRP981611



AFC37130

## POWER STEERING HOSES



DESCRIPTION	P/N
46" Power Steering pressure hose (AN6 ends)	BRP577
75" Power Steering pressure hose (AN6 ends)	BRP578
Niels - Profile Aluminum 52" power steering pressure hose	BRP578-1
AN10 Power Steering return hose and fitting kit	BRP582
AN6 Bulk power steering hose (sold per foot)	XRP510006

## POWER STEERING FLUID FILTER

FILTER

BRP585

Replacement Element AFC84022



- AN10 fittings
- Comes with stainless steel filter element

# STEERING & ACCESSORIES

## ALUMINUM POWER STEERING RESERVOIRS



FIG. 1

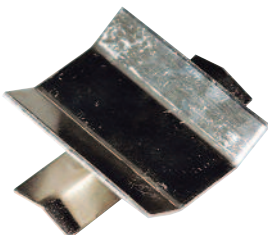


FIG. 2



FIG. 3



### Power steering reservoir with weld on bracket

**BRP 563B**

- Can be used for any type of reservoir.
- Mounting bracket has 2- 7/16" diameter holes- perfect for dzus button mounting.
- Direct bolt in application for 2000-to present Bicknell chassis with BRP bodies.
- Has red anodized threaded cap for easy installation/removal and has o-ring to provide leak free seal.

FIG.	DESCRIPTION	P/N
1	Aluminum round tank with billet cap	<b>BRP563</b>
2	Round tank mounting bracket to mount tank on horizontal tubing	<b>BRP564</b>
3	Aluminum round tank with flat mounting bracket and billet cap	<b>BRP563B</b>
4	Replacement cap for BRP563 & BRP563B (comes with NIA216oring)	<b>BRP563F</b>
5	Mounting plate for BRP563B (Dirt Modified)	<b>BRP562M</b>



FIG. 4



FIG. 5

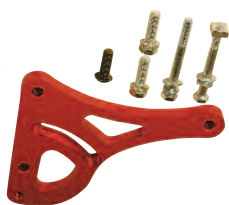
## POWER STEERING BRACKETS

### HEAD MOUNT POWER STEERING BRACKET FOR BIG BLOCK CHEVY

Kit **BRP7154**

Mount Only **BRP7152**

Spacer **BRP7150**



### HEAD MOUNT POWER STEERING BRACKET KIT FOR SMALL BLOCK CHEVY WITH HARDWARE

Kit **BRP277**

**NOTE: New design holds square nut in place**

Replacement Spacer **BRP277S**

Bracket Only **BRP275**

Square Nut Plate **BRP275-1**

For serpentine setup use BRP949 belt



### FORD 351 WINDSOR BRACKET

Complete Kit **BRP936**

Bracket Only **BRP935**

Spacers (Each) **BRP934**



### BLOCK MOUNT POWER STEERING BRACKET KIT FOR SMALL BLOCK CHEVY WITH HARDWARE

Kit **BRP268**

For serpentine setup use BRP949-5 belt



### BLOCK MOUNT POWER STEERING BRACKET FOR BIG BLOCK CHEVY

Red Bracket **BRP271**

Use BRP 1633 and 1633-1 to adapt small style pump



Small power steering pump to large power steering bracket adaptor or spacer

### 1/8" THICK BRACKET

Red **BRP1631**

Gold **BRP1631G**

### 3/8" THICK BRACKET

Red **BRP1633**

Gold **BRP1633G**

### 1/2" THICK BRACKET

Red **BRP1633-1**

Gold **BRP1633-1G**

### 5/8" THICK BRACKET

Red **BRP1634**

Gold **BRP1634G**



### CHEVY MOUNT FRONT SPACERS FOR BIG BLOCK (WET SUMP APPLICATIONS)

1/8" Thick **BRP270**

1/4" Thick **BRP270-1**

3/8" Thick **BRP270-2**



**NEW PRODUCT**

### Small Block Ford Power Steering Head Mount for Serpentine Pulley

**BRP1421**

- Comes with all necessary mounting bolts and spacers.
- Use with BRP 581 power steering pump.
- Mounts power steering pump to left cylinder head.
- Machined from 6061 aluminum.
- Anodized red finish.

## RADIUS RODS AND TIE RODS

- Milled Flats For Wrench
- Tapered End Design
- Length Engraved on flat



All Lengths Under  
36" are Red Anodized  
Over 36" are Polished

### 1" O.D. Tubing 5/8" Threads

LENGTH	P/N
6"	BRP1060
7"	BRP1070
8"	BRP1080
8-1/2"	BRP1085
9"	BRP1090
10"	BRP1100
10-1/2"	BRP1105
11"	BRP1110
11-1/2"	BRP1115
12"	BRP1120
12-1/2"	BRP1125
13"	BRP1130
13-1/2"	BRP1135
14"	BRP1140
14-1/2"	BRP1145
15"	BRP1150
15-1/2"	BRP1155
16"	BRP1160
16-1/2"	BRP1165
17"	BRP1170
17-1/2"	BRP1175
18"	BRP1180
18-1/2"	BRP1185
19"	BRP1190
19-1/2"	BRP1195
20"	BRP1200
20-1/2"	BRP1205
21"	BRP1210
21-1/2"	BRP1215
22"	BRP1220
22-1/2"	BRP1225
23"	BRP1230
23-1/2"	BRP1235
24"	BRP1240
24-1/2"	BRP1245
25"	BRP1250
25-1/2"	BRP1255
26"	BRP1260
26-1/2"	BRP1265
27"	BRP1270
27-1/2"	BRP1275
28"	BRP1280
28-1/2"	BRP1285
29"	BRP1290
29-1/2"	BRP1295

### 1-1/4" O.D. Tubing 5/8" Threads

LENGTH	P/N
15"	BRPRR15
17"	BRPRR17
18"	BRPRR18
18-1/2"	BRPRR18-1/2
19"	BRPRR19
19-1/2"	BRPRR19-1/2
20"	BRPRR20
20-1/2"	BRPRR20-1/2
21"	BRPRR21
21-1/2"	BRPRR21-1/2
22"	BRPRR22
22-1/2"	BRPRR22-1/2
24"	BRPRR24
24-1/2"	BRPRR24-1/2
25"	BRPRR25
25-1/2"	BRPRR25-1/2
26"	BRPRR26
26-1/2"	BRPRR26-1/2
27"	BRPRR27
27-1/2"	BRPRR27-1/2
28"	BRPRR28
28-1/2"	BRPRR28-1/2
29"	BRPRR29
45"	BRPRR45
45-1/2"	BRPRR45-1/2
46"	BRPRR46
46-1/2"	BRPRR46-1/2
47"	BRPRR47
47-1/2"	BRPRR47-1/2
48"	BRPRR48
48-1/2"	BRPRR48-1/2
49"	BRPRR49
61"	BRPRR61
62"	BRPRR62
63"	BRPRR63
64"	BRPRR64
64" Bent	BRPRR64B
65"	BRPRR65
66" Bent (setback car)	BRPRR66B
68"	BRPRR68
68-1/2"	BRPRR68-1/2



### Chrome Moly 4130 Steel (Lightweight)

LENGTH	P/N
48-1/2"	BRPRR48-1/2S
64"	BRPRR64BS

### 1" O.D. Tubing 3/4" Threads

LENGTH	P/N
8"	BRP13080
9"	BRP13090
10"	BRP13100
11"	BRP13110
12"	BRP13120
14"	BRP13140
15"	BRP13150
16"	BRP13160
17"	BRP13170
18"	BRP13180
18-1/2"	BRP13185
19"	BRP13190
20"	BRP13200
21"	BRP13210
22"	BRP13220
23"	BRP13230
24"	BRP13240
28"	BRP13280
30"	BRP13300
32"	BRP13320



### ECONOMY RADIUS RODS

Unanodized - no tapers or flats

### 3/4" O.D. Tubing 1/2" Threads

LENGTH	P/N
8"	BRP75080
9"	BRP75090
22"	BRP75220
24"	BRP75240
26.75"	BRP75267

### 1" O.D. Tubing 5/8" Threads

LENGTH	P/N
14-1/2"	BRP1000-145
21"	BRP1000-210
25"	BRP1000-250

### 1-1/4" O.D. Tubing 5/8" Threads

LENGTH	P/N
27"	BRPR270
27-1/2"	BRPR275

Unanodized Tap Tubing available in 6' & 8' lengths.  
(Listed on page 11)

# STEERING & ACCESSORIES

## STEEL ROD ENDS



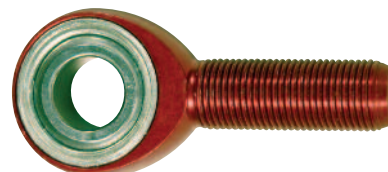
ROD END SPECS.			COMMERCIAL GRADE ZINC 1 PIECE		MOLY ONE PIECE BLACK OXIDE		PRECISION GRADE ZINC 2 PIECE		AIRCRAFT GRADE 4130 PLATED	
BORE	SHANK	TYPE	RH THRD.	LH THRD.	RH THRD.	LH THRD.	RH THRD.	LH THRD.	RH THRD	LHT HRD.
3/16"	3/16"	Male	BRE1031R	BRE1031L						
3/16"	3/16"	Female	BRE1032R							
1/4"	1/4"	Male	BRE1041R	BRE1041L						
1/4"	1/4"	Female	BRE1042R	BRE1042L						
1/4"	1/4"	Stud/Fem.	BRE1042RS	BRE1042LS						
5/16"	5/16"	Male	BRE1051R	BRE1051L						
5/16"	5/16"	Female	BRE1052R	BRE1052L						
5/16"	3/8"	Male					BRE4061R	BRE4061L		
3/8"	3/8"	Male	BRE1061R	BRE1061L			BRE2061R	BRE2061L		
3/8"	3/8"	Female	BRE1062R	BRE1062L						
7/16"	7/16"	Male	BRE1071R	BRE1071L			BRE2071R	BRE2071L		
7/16"	7/16"	Female	BRE1072R	BRE1072L						
7/16"	1/2"	Male					BRE4081R	BRE4081L		
1/2"	1/2"	Male	BRE1081R	BRE1081L			BRE2081R	BRE2081L		
1/2"	1/2"	Female	BRE1082R	BRE1082L			BRE2082R	BRE2082L		
1/2"	5/8"	Male			BRE5081R	BRE5081L	BRE4101R	BRE4101L		
5/8"	5/8"	Male	BRE1101R	BRE1101L	BRE5101R	BRE5101L	BRE2101R	BRE2101L	BRE3101R	BRE3101L
5/8"	5/8"	Female	BRE1102R	BRE1102L					BRE3102R	BRE3102L
5/8"	3/4"	Male					BRE4121R	BRE4121L		
3/4"	3/4"	Male	BRE1121R	BRE1121L			BRE2121R	BRE2121L	BRE3121R	BRE3121L
3/4"	3/4"	Female	BRE1122R	BRE1122L						

## STEEL COM BEARINGS

1/2"	BRECOM8
5/8"	BRECOM10
3/4"	BRECOM12
1"	BRECOM16



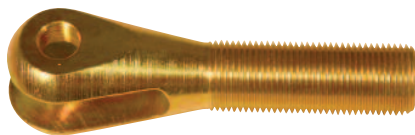
## ALUMINUM ROD ENDS



## STEEL CLEVIS

### Fine Threads

- 5/8" shaft
- 3/8" hole
- 3/8" slot



Right hand thread	BRP690
Left hand thread	BRP691

BORE	SHANK	THREADS	P/N
1/2"	1/2"	20-R.H.	BRE6081R
1/2"	1/2"	20-L.H.	BRE6081L
1/2"	5/8"	18-R.H.	BRE7101R
1/2"	5/8"	18-L.H.	BRE7101L
5/8"	5/8"	18-R.H.	BRE6101R
5/8"	5/8"	18-L.H.	BRE6101L
3/4"	3/4"	16-R.H.	BRE6121R
3/4"	3/4"	16-L.H.	BRE6121L

## ALUMINUM TAP TUBING

DESCRIPTION	LENGTH	P/N
5/8" O.D. X .156" Wall 6061T6 - Taps 3/8"	6'	BRP4340-720
1" O.D. X .220" Wall 6061T6 - Taps 5/8"	6'	BRP1000
1" O.D. X .220" Wall 6061T6 - Taps 5/8"	8'	BRP1000-8
1-1/4" O.D. X .345" Wall 6061T6 - Taps 5/8"	6'	BRPRR72
1-1/4" O.D. X .345" Wall 6061T6 - Taps 5/8"	8'	BRPRR96

# STEERING & ACCESSORIES

## WELD IN RADIUS ROD SLUGS



**BRP1486**



**BRP1488**

DESCRIPTION	P/N
1/2" RH slug for 1" X .065 wall tube (pictured)	<b>BRP1496</b>
1/2" LH slug for 1" X .065 wall tube	<b>BRP1497</b>
1/2" RH slug for 1" X .120 wall tube (pictured)	<b>BRP1488</b>
1/2" LH slug for 1" X .120 wall tube	<b>BRP1489</b>
5/8" RH slug for 1-1/8" X .065 wall tube (pictured)	<b>BRP1486</b>
5/8" LH slug for 1-1/8" X .065 wall tube	<b>BRP1487</b>
5/8" RH slug for 1-1/8" X .125 wall tube (pictured)	<b>BRP1490</b>
5/8" LH slug for 1-1/8" X .125 wall tube	<b>BRP1491</b>
3/4" RH slug for 1-1/8" X .065 wall tube (pictured)	<b>BRP1494</b>
3/4" LH slug for 1-1/8" X .065 wall tube	<b>BRP1495</b>
3/4" RH slug for 1-1/4" X .095 wall tube (pictured)	<b>BRP1492</b>
3/4" LH slug for 1-1/4" X .095 wall tube	<b>BRP1493</b>



**BRP1490**



**BRP1494**



**BRP1492**



**BRP1496**

## WELD ON SLUGS



**Panhard Slug**  
(Tapered OD from 1" to 7/8"  
X 5/8" fine X 1-1/2" long)

**BRP1498**



**Radius Rod Slug**  
(5/8" ID X 2-1/4" long X 7/8" OD)

**BRP735**



**Weld On Slug**  
(1" OD X 1/2" ID X 1" Long)  
Front axle bracket slug for BRP1505

**MFGCHA28**



**Radius Rod Slug**  
(5/8" ID X 2-3/4" long X 7/8" OD)

**BRP1609**



**Radius Rod Slug**  
(1/2" ID X 2-1/4" L X 3/4" OD)

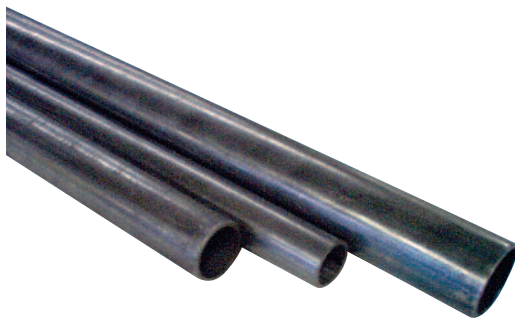
**BRP1511**



**Panhard Bracket Slug**  
(1/2" ID X 2-3/4" long X 3/4" OD)  
For BRP1503 or BRP1622

**MFGCHA49**

## STEEL TUBING



TUBING SIZE O.D. X WALL THICKNESS	MATERIAL P/N	
	1020 DOM	4130 CHROME MOLY
1" X .065	<b>MAT1.00X065DOM</b>	<b>MAT1.00X065CM</b>
1" X .120	<b>MAT1.00X120DOM</b>	
1-1/8" X .065		<b>MAT1.125X065CM</b>
1-1/8" X .125	<b>MAT1.125X125DOM</b>	
1-1/4" X .095	<b>MAT1.25X095DOM</b>	<b>MAT1.25X095CM</b>

Steel tubing up to 9 foot lengths can be shipped UPS.  
Cutting charge will be assessed on pieces less than 9'.

## JAM NUTS



SIZE	THICKNESS	STEEL		ALUMINUM	
		R.H.	L.H.	R.H.	L.H.
3/16"-28	7/32"	<b>BRP774</b>	<b>BRP775</b>		
1/4"-28	7/32"	<b>BRP776</b>	<b>BRP777</b>		
5/16"-24	1/4"	<b>BRP778</b>	<b>BRP779</b>		
3/8"-24	1/4"	<b>BRP780</b>	<b>BRP781</b>		
7/16"-24	1/4"	<b>BRP782</b>	<b>BRP783</b>		
1/2"-20	5/16"	<b>BRP784</b>	<b>BRP785</b>	<b>BRP784A</b>	
5/8"-18	3/8"	<b>BRP786</b>	<b>BRP787</b>	<b>BRP770</b>	<b>BRP771</b>
3/4"-16	7/16"	<b>BRP788</b>	<b>BRP789</b>	<b>BRP772</b>	<b>BRP773</b>

## NYLOCK NUTS



SIZE	P/N
3/8" - 24 R.H.	<b>BRP2917</b>
1/2" - 20 R.H.	<b>BRP834</b>
5/8" - 18 R.H.	<b>BOL103F</b>
3/4" - 16 R.H.	<b>BOL123F</b>

# STEERING & ACCESSORIES

## STEEL REDUCER BUSHINGS



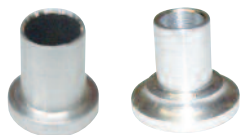
O.D.	I.D.	LENGTH	P/N
1/2"	3/8"	.625"	<b>BRP748</b>
5/8"	1/2"	.500"	<b>BRP758</b>
5/8"	1/2"	.750"	<b>BRP750</b>
5/8"	1/2"	1.25"	<b>BRP754</b>
5/8"	1/2"	1.625"	<b>BRP492</b>
5/8"	1/2"	2.00"	<b>BRP484</b>
5/8"	1/2"	2.50"	<b>BRP493</b>
3/4"	1/2"	.750"	<b>BRP752</b>
3/4"	5/8"	.750"	<b>BRP751</b>

## STEEL TAPERED SPACERS



LENGTH	O.D. BORE	7/8"	1"	1"	1 1/8"
		1/2"	1/2"	5/8"	3/4"
1/4"		<b>BRP718</b>		<b>BRP724</b>	<b>BRP733</b>
1/2"		<b>BRP719</b>		<b>BRP721</b>	<b>BRP734</b>
5/8"					
3/4"		<b>BRP720</b>			
1-1/4"			<b>BRP720-1</b>		
2-1/4"				<b>BRP735</b>	

## ALUMINUM REDUCER SPACERS



3/8" to 5/16" W/ 1/8" Spacer **BRP4060**  
 1/2" to 3/8" W/ 1/4" Spacer **BRP4058**

## BIRDCAGE SPACERS



Red Anodized Aluminum

LENGTH	CONCAVE	FLAT	FLAT
	1/2" HOLE	3/8" HOLE	7/16" HOLE
.500"			
.625"		<b>BRP497</b>	
.750"		<b>BRP491</b>	
.845"			
1.00"	<b>BRP726</b>		
1.25"		<b>BRP494</b>	
1.37"		<b>BRP496</b>	
1.62"		<b>BRP481</b>	
2.00"	<b>BRP482</b>	<b>BRP480</b>	
2.20"	<b>BRP4317</b>		
2.50"		<b>BRP485</b>	<b>BRP499</b>

## FLAT ALUMINUM SPACERS



LENGTH	13/16" O.D.	1" O.D.	1" O.D.
	3/8" HOLE	1/2" HOLE	5/8" HOLE
1/8"	<b>BRP705</b>	<b>BRP712**</b>	
3/16"	<b>BRP706</b>	<b>BRP713**</b>	
1/4"	<b>BRP707</b>	<b>BRP714**</b>	<b>BRP765</b>
5/16"	<b>BRP708</b>	<b>BRP715**</b>	
3/8"	<b>BRP709</b>	<b>BRP716**</b>	<b>BRP766</b>
7/16"	<b>BRP711</b>		
1/2"	<b>BRP710</b>	<b>BRP717**</b>	<b>BRP767</b>
9/16"		<b>BRP4555**</b>	
5/8"		<b>BRP717-1**</b>	
.700"		<b>BRP693**</b>	
3/4"		<b>BRP693-1**</b>	
.800"		<b>BRP693-2**</b>	
.845"		<b>BRP693-3**</b>	
1"		<b>BRP726**</b>	
1.16"		<b>BRP696**</b>	
1.195"		<b>BRP4556**</b>	
1-1/2"		<b>BRP695**</b>	
1.785"		<b>BRP4557**</b>	
1-7/8"		<b>BRP697**</b>	
2"		<b>BRP703**</b>	
2-1/4"		<b>BRP698**</b>	
3.30"		<b>BRP931**</b>	
3-1/2"		<b>BRP699**</b>	
4"		<b>BRP704</b>	
4.885"		<b>BRP934</b>	
4-7/8"		<b>BRP694</b>	

\*\*Red Anodized

## ALUMINUM SPACERS



3/8" Wide x 3/8" Hole **BRP4053**  
 3/8" Wide x 7/16" Hole **BRP4056**

## ALUMINUM TAPERED SPACERS



LENGTH	1" OD		1-1/4" OD		1-1/2" OD	
	1/2" HOLE	5/8" HOLE	1/2" HOLE	5/8" HOLE	3/4" HOLE	5/8" HOLE
1/2"	<b>BRP730</b>	<b>BRP736</b>			<b>BRP760</b>	
5/8"	<b>BRP483</b>	<b>BRP722</b>				
3/4"	<b>BRP730-1</b>	<b>BRP736-1</b>			<b>BRP762</b>	
1"	<b>BRP731</b>	<b>BRP737</b>	<b>BRP742</b>	<b>BRP746</b>	<b>BRP763</b>	<b>BRP755*</b>
1-1/4"		<b>BRP739</b>				
1-1/2"	<b>BRP732</b>	<b>BRP738</b>		<b>BRP747</b>		
1-3/4"		<b>BRP436</b>				
2-1/4"		<b>BRP437</b>				

\*Drag link and Tie rod end spacer