



SPRINT CAR COMPONENTS

Steering Arms

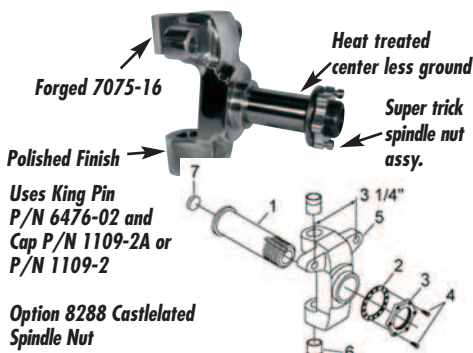


All Winters sprint steering arms are forged 7075-T6 aluminum.

1	2	3	4	5	P/N
5.737"	.981"	6.000"	.598"	3-1/4"	WIN3452
5.737"	.981"	N/A	N/A	3-1/4"	WIN3451
5-1/2"	5/8"	N/A	N/A	3-1/4"	WIN3651
5-1/2"	5/8"	6-3/8"	1/2"	3-1/4"	WIN3652

- Dimension from tie rod center-line to king pin
- Dimension from tie rod center-line to spindle
- Dimension from drag link center-line to spindle
- Dimension from drag link center-line to center line of king pin
- Dimension from mounting bolt to mounting bolt

Aluminum Front Spindle



Uses King Pin P/N 6476-02 and Cap P/N 1109-2A or P/N 1109-2

Option 8288 Castledated Spindle Nut

Sprint 10° Front Spindle Kit P/N **WIN3622**

Sprint 10° Front Spindle Kit w/Titanium Shaft P/N **WIN3622T**

DESCRIPTION	#	QTY	P/N
Spindle Shaft	1*	1	WIN3459
Spindle Shaft, Ti	1*	1	WIN3459T
Lockwasher	2	1	WIN2124
Locknut	3	1	WIN2125
Cap Screw	4	2	WIN2126
Spindle Base	5	1	WIN3458
Bushing	6	2	WIN7515
Core Plug	7	1	WIN7860

*P/N may vary depending on part ordered

Aluminum Front Hub Kit

WIN3980

Hub P/N 3783-01 w/ rotor mount Aluminum 4lbs. 13oz. w/ races and studs.

Hub P/N 3783 Aluminum 4lbs. 11oz. w/ races and studs.



These hubs are machined from 2024-T3 forgings, others use 6061.



DESCRIPTION	QTY.	P/N
Hub, Right	(1)	WIN3783
Hub, Left (w/rotor mount)	(1)	WIN3783-01
Single Lip Seal (grease)	(2)	WIN7297V
Double Lip Seal (oil)	(2)	WIN7291V
Inner Bearing Cone	(2)	WIN8666
Inner Bearing Cup	(2)	WIN8635
Bolt	(10)	WIN8731
Nut	(10)	WIN8735
O'Ring	(2)	WIN8419
Screw In Hub Cap	(2)	WIN3749-01
Shim, must use w/ dble lip seal (.09)	(2)	WIN3748

Torsion Arms



A	ANGLE	P/N
18-1/2"		WINSC2120L
18-1/2"		WINSC2120L-HD
16-3/4"	10°	WINSC2125R
16-3/4"		WINSC2130R

A	B	P/N
13-1/4"	4-1/2"	WINSC2686R
13-1/4"	5-1/4"	WINSC2687R
15"	2-1/2"	WINSC2688L
15"	3"	WINSC2689L
15"	3-1/4"	WINSC2691L

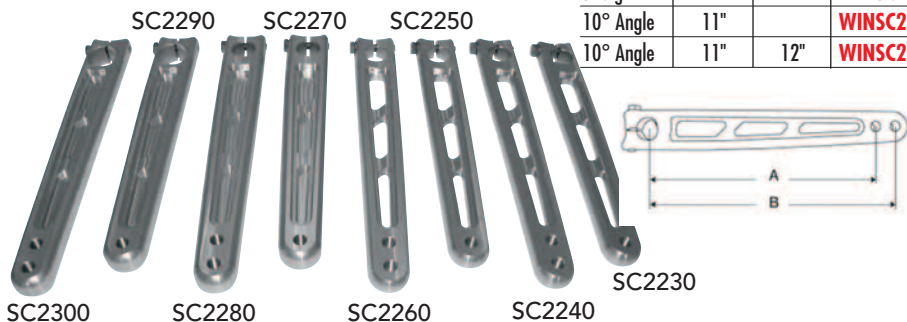
- Heavy Duty styles are for racers that "feel" the arms flex under load
- 10° Angle Broach makes wheel rate stiffer
- Contact patch under the arm is rounded to prevent premature arm wear

- Winters Rear Arms are solid from the bend to the back of the rear arm to help reduce flexing. Winters is the ONLY ONE to offer this feature
- Winters Rear Arms are the ONLY ONES to offer a light press fit on the shock bolt mounting area
- Most popular Right Rear Arm is SC2687R
- Most popular Left Rear Arm is SC2691L
- 100% Machined Surface

Pitman Arms

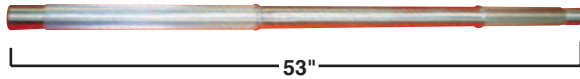
- Broach "Straight" or Standard Arms
- 10° Broach Arms for shorter steering arm shaft, or for more header clearance
- Lightweight arms offer more protection for steering box
- The most popular style is SC2260
- 100% Machined

BROACH	A	B	P/N
Straight	11"		WINSC2230
Straight	11"	12"	WINSC2240
10° Angle	11"		WINSC2250
10° Angle	11"	12"	WINSC2260
Straight	11"		WINSC2270
Straight	11"	12"	WINSC2280
10° Angle	11"		WINSC2290
10° Angle	11"	12"	WINSC2300



REAR ALUMINUM AXLE

Gun Drilled Aluminum 1-7/8" threaded ends
2" Splines



BRP2900

48" Minisprint Axle (53" Overall)
16" Spline on R.H. Thread Side
10" Spline on L.H. Thread Side

STEEL AXLES

1-1/4" Chrome Moly Keyed Axles



44" X 1-1/4" .250 Wall 4130 C.M. **BRP4097-44**

46" X 1-1/4" .250 Wall 4130 C.M. **BRP4097-46**

48" X 1-1/4" .250 Wall 4130 C.M. **BRP4097-48**

ALUMINUM AXLE SPACERS

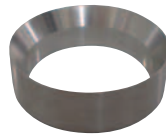


Flat Aluminum Spacers

RATE	P/N
.250"	BRP2909
.500"	BRP2909-1
.625"	BRP2909-2
1.00"	BRP2909-3
1.57"	BRP2909-5
2.00"	BRP2909-6
2.50"	BRP2909-7
3.00"	BRP2909-10



TAPERED CONE SPACER
BRP2894



**FEMALE TAPER TO
FLAT SPACER**
BRP2908

REAR AXLE NUTS



Hard Coated
Use With **BRP2908**

1-7/8" RIGHT HAND AXLE NUT
BRP2892

1-7/8" LEFT HAND AXLE NUT
BRP2893

BEARING INSERTS



ALUMINUM INSERT FOR
BRP2910 BEARING
BRP2905

SINGLE ALUMINUM BEARING
INSERT FOR BRP2910-1
BEARING
BRP2906

DOUBLE ALUMINUM INSERT FOR
BRP2910-1 BEARING
BRP2907

BIRDCAGES



Hench Style Birdcage
Uses **BRP2910** bearing (6011)

BEARING RETAINER PLATE
BRP2941



**CALIPER MOUNT(DLII) AND
RETAINER PLATE**
BRP2946



BEARING RETAINER PLATE
BRP2947

Bearings



**6011 BEARING FOR USE WITH
BRP2939 OR BRP2941**
BRP2910

**6211 BEARING FOR USE WITH
BRP2906 OR BRP 2907**
BRP2910-1

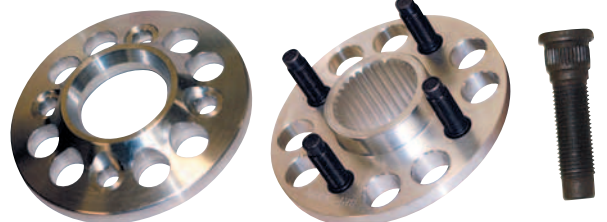
6010 BEARING
BRP4124

SPROCKET HUBS



6 ON 5-1/4" BOLT CIRCLE
SPROCKET HUB (HENCH STYLE)
BRP2935

PIN SPLINED HUBS



DESCRIPTION	P/N
4 on 4" Hub with 1/2" fine studs	BRP2930
Replacement 1/2" fine wheel stud	BRP2932
4 on 4" Hub with drive pins	BRP2936
4 on 4" Hub pressure plate	BRP2936-1
3/8 Nylock nut for replacement pin	BRP2917

TORSION STOPS



7/8" Broach Aluminum Torsion Stop

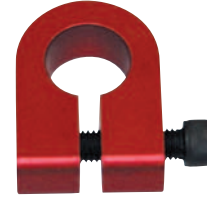
BRP2962



3/4" Broach Aluminum Torsion Stop

BRP4172

WING SLIDER



Aluminum Wing Slider

Fits 1" Tubing **BRP4175**

FRONT HUBS AND SPINDLES

Front Hubs

Fits **BRP2990** Spindle



4 PIN ON 4" B.C. HUB WITH 1/2" FINE STUDS

BRP3006

(Dust cap and bearings sold separately)



DUST CAP FOR BRP3006 HUB
BRP3007

Front Hub Bearings

For **BRP3006** Hub



DESCRIPTION	P/N
Tapered roller outer bearing assembly	BRP3000
Inner race	BRP2998
Inner bearing with seal	BRP2999

7° Light Weight Aluminum Front Spindle - Steel snout



DESCRIPTION	P/N
Front spindle	BRP2990
5/8" Kingpin	BRP4155
Replacement Bushing	BRP4153
Replacement Snout	BRP2990S
Castle Nut	BRP4151
Kingpin Shim 5/8" x .150"	BRP4156
Kingpin Shim 5/8" x .125"	BRP4156-1



Aluminum Front Spindle

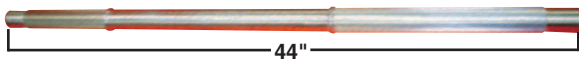
7° - 5/16" on 1" B.C. mounting holes

Fits **BRP4146** Hub

See Page 165

DESCRIPTION	P/N
Front spindle	BRP2994
11/16" kingpin	BRP2996
Replacement bushing	BRP2991
Replacement steel snout	BRP2995
Castle nut	BRP4151

MICRO SPRINT AXLES



Splined Aluminum Axles

BRP4102

- 1-5/8" Spline • Gundrilled
- 44" Long
 - 17-1/4" R.H. Threaded spline length
 - 18-1/8" L.H. Threaded spline length
 - Right or left hand drive

SPLINED AXLE KITS

Rear Drive Axle Assembly

BRP4102A



Assembly includes:

DESCRIPTION	QTY.	P/N
47" Aluminum splined axle	(1)	BRP4102
Splined hub with 4 - 1/2" F. studs	(2)	BRP4106
Bearing insert for BRP4124 BRG.	(2)	BRP4115
Splined rotor hub	(1)	BRP4108
Splined sprocket hub	(1)	BRP4126
1-5/8" R.H. Rear axle nut (15° taper)	(1)	BRP4110
1-5/8" L.H. Rear axle nut (15° taper)	(1)	BRP4111

Use **BRP4102** axle & **BRP** spacers for universal fit.

REAR AXLE SPACERS

Splined Aluminum Spacers



WIDTH	P/N
1/2"	BRP4114-1
1"	BRP4114-3
2"	BRP4114-6
2-1/2"	BRP4114-7

Non-Splined Aluminum Spacers

WIDTH	P/N
1/4"	BRP4095
1/2"	BRP4095-1
5/8"	BRP4095-2
1"	BRP4095-3
1-1/2"	BRP4095-4

Tapered Aluminum Spacers



1-1/2" LONG TAPER
BRP4112



SPLINED BEARING INSERT
BRP4115



TAPER SPACER TO SEAT NUT
BRP4113

SPLINED HUBS



4 Stud Splined Hub With 1/2" Studs

BRP4106



4 Stud Splined Hub With 1/2" Studs

BRP4105

(For 30° Taper Nut)



Splined RotorHub

(Use with BRP4177 & BRP4178 Rotor)

BRP4108

AXLE NUTS



R.H. AXLE NUT 15° (STALLARD)
BRP4110

(Use with BRP4113 Seat)

L.H. AXLE NUT 15° (STALLARD)
BRP4111

(Use with BRP4113 Seat)

R.H. AXLE NUT 30°
BRP4110-1

L.H. AXLE NUT 30°
BRP4111-1

MICRO SPROCKET HUBS



Aluminum Splined Sprocket Hub

BRP4126



Quick Change Sprocket Pressure Plate

Includes sprocket hub bolts only.

BRP4137

1-1/4" REAR KEYED STEEL AXLES



.250 Wall - 4130 Chrome Moly

Stocked in 44", 46" and 48"

4097 - (Length)

MICRO SPRINT ROTORS



BRP4176



BRP4177



BRP4178

DESCRIPTION	DIAMETER	WIDTH	MATERIAL	P/N
4 Bolt- 4 on 3"	8"	3/16"	Steel	BRP4177
1-3/4" Splined	8"	3/16"	Steel	BRP4176
4 Bolt- 4 on 3"	9-1/2"	3/16"	Drilled Steel	BRP4178

REAR KEYED AXLE HUBS



6 on 5-1/4" Sprocket Hubs

1-1/4" Split Sprocket Hub	BRP4128
1-3/8" Split Sprocket Hub	BRP4129



4 on 4" Wheel Hubs

1-1/4" Split Hub with 1/2" Fine Studs	BRP4134
1-3/8" Split Hub with 1/2" Fine Studs	BRP4135
1-1/2" Split Hub for Acro Rear	BRP4136



Splined Rotor Hub

For use with BRP4119, BRP4177 and 4178 Rotors

BRP4108

TORSION STOPS

Aluminum Torsion Stops



7/8" BROACH ALUMINUM TORSION STOP

BRP2962



3/4" BROACH ALUMINUM TORSION STOP

BRP4172

TORSION ARMS



3/4" Broach

DESCRIPTION	P/N
1/2" Left front torsion arm	BRP4166
1/2" Right front torsion arm	BRP4167
5/8" Blank front torsion arm	BRP4170
1/2" Thick x 15-1/2" long blank arm	BRP4164

7/8" Broach

DESCRIPTION	P/N
5/8" thick x 15-1/2" blank arm	BRP4165-1

DIRECT MOUNT WHEEL CENTERS



Front Aluminum Hub

Fits BRP4152HD Spindle

BRP4144



Front Aluminum Hub

Fits BRP4191 spindle

BRP4189



Splined Aluminum Hub

Fits all micro splined rear axles

BRP4131

BRP **SPRINT/MICRO/MINI** & ACCESSORIES

FRONT MICRO AXLES



Use with BRP4152HD Spindle

AXLE EYE

BRP4162E

DESCRIPTION	P/N
10° front coil over axle	BRP4161
10° front torsion arm axle	BRP4162

Also available with 7° ends



Use with BRP4152HD spindle

Pin and shim sold separately



Spindle Assembly

King pin and shim sold separately

BRP4191

Uses BRP4188 Hub

DESCRIPTION	P/N
10° Alum. Spindle w/ steel snout	BRP4152HD
5/8" x 3.650" Steel kingpin (sold separately)	BRP4155
Replacement king pin bushing (each)	BRP4153
Replacement steel snout	BRP4154
Spindle castle nut	BRP4151
.150" Thick shim	BRP4156
.125" Thick shim	BRP4156-1

DESCRIPTION	P/N
5/8" King pin x 3.850	BRP4194
.150" King pin shim	BRP4156
.125" Thick shim	BRP4156-1
Spindle snout	BRP4192
Repl. bushings	BRP4153
Spindle nut	BOL163F
Snap ring	BRP4193
Axle eye	BRP4163



Aluminum Steering Arms

DESCRIPTION	P/N
Left front steering arm	BRP4158
Right front steering arm	BRP4159



Aluminum Steering Arms

LONG STEERING ARM
FOR BRP4191
BRP4196

SHORT STEERING ARM
FOR BRP4191
BRP4195

FRONT HUB

For BRP4152HD & BRP2994 Spindle



4 on 4" Hub With 1/2" Fine Studs

Fits BRP4152HD spindle.

BRP4146

For BRP4191 Spindle

Hub Assembly with Studs, Nuts and Bearings

BRP4188



DESCRIPTION	P/N
Replacement bearing (2 req.)	BRP4148
Replacement stud (4 req.)	BRP4190
1/2" C. narrow nylock	BOL083C
1/2" F. flange whiz nut	BRP4150



1/2" Fine 'Whiz' Nut

BRP4150

FRONT HUB KIT

For BRP4152HD & BRP2994 Spindle



Front Hub Kit

Complete with hub, inner & outer bearing and dust cover

BRP4145

Kit contains the following:

QTY.	DESCRIPTION	P/N
1	Hub	BRP4146
1	Inner bearing	BRP4148
1	Outer bearing	BRP4149
1	Dust cap	BRP3007