

## BICKNELL DIRT MODIFIED CHASSIS



CHASSIS BUILT ON NCSOCO  
BENDER-TUBING NOTCHED IN CNC FADAL MILL

CONSTRUCTED WITH DOM TUBING –  
JIG FORMED AND MIG WELDED

- PRECISION FIT & WELDED
- COMPLETE ROLLERS
- CHASSIS, BODY & BUMPERS
- BARE CHASSIS

### GET THE BEST OF EVERYTHING

- Billet aluminum 6 pin spindles (BRP4590)
- Billet aluminum wide five hubs (BRP821)
- AFCO OR Eibach coil springs
- Bert OR Winters transmission
- BRP billet aluminum calipers or forged Wilwood
- Winters, Schroeder, or DMI torsion bars
- Griffin aluminum rad - Pats (optional)
- Fuel safe fuel cell (22 gallon)
- Kirkey deluxe seat
- Bilstein shocks
- Profile steering box
- Quantum gauges in panel (prewired)
- Leaf safety belts
- Wilwood balance bar
- Wilwood master cylinders
- Winters rear end with alum tubes and  
posilock pinion (8 bolt or smart tube)
- Bert inboard starter and bellhousing

### Call Us Or Your Local Chassis Dealer For More Information

• ANDY'S SERVICE	JOHNSTOWN, NY	(518) 762-1333
• A1 RACING	WARMINSTER, PA	(215) 675-8442
• BANDIT SPEED	BRANDON, VT	(802) 247-6168
• BEHRENTS SPEED SUPPLY	FLORIDA, NY	(845) 651-7389
• BIG DADDYS SPEED	GROVE CITY, PA	(724) 458-6465
• BOB MULLEN PRO SPEED	BATAVIA, NY	(585) 343-5243
• GIBBS SPEED & AUTO	NORTH NORWICH, NY	(607) 336-6903
• HOFFMAN BROS. SPEED EQUIPMENT	NEW TRIPOLI, PA	(610) 760-6274
• J & L SPEED	BECHTELSTVILLE, PA	(610) 369-5502
• LAKE ERIE SPEED SPECIALTIES	HARBORCREEK, PA	(814) 897-0259
• METAL FAB	PENNINGTON, NJ	(609) 730-0096
• #1 SPEED EQUIPMENT	WATERTOWN, NY	(315) 782-2225
• PAINE MOTORSPORTS	WATERLOO, NY	(315) 539-7777
• P.O.P.	ST. DAMASE, QUE	(450) 797-3419
• PROMOTION SPEED SUPPLY	CENTRAL SQUARE, NY	(315) 676-7223
• RICK'S TRAILER CITY	ALEXANDRIA, LA	(318) 448-0022
• SD PERFORMANCE	SOREL, QUE	(450) 880-6976
• T & G SPEED	KINGSTON, ONT	(613) 547-6161
• TOTAL RACE SUPPLY	ST. ANDREWS, ONT	(613) 938-6027
• TRACKSIDE PRODUCTS	VESTAL, NY	(607) 748-3322
• TRAPS SPEED SHOP	SCRANTON, PA	(570) 344-7945

## BICKNELL CHASSIS

Option 1



DOM chassis with all mounts

### Option 3

QTY.	DESCRIPTION	P/N
2	Front caliper brackets	BRP18-2375
2	Front brake line guard	BRP42L
1	Front brake line guard	BRP42R
2	Rear rotor bolt kits	BRP51
2	3/8" front LW drilled rotors	BRP65W
2	.810 rear rotors	BRP71
2	Rear hub seals	BRP114
2	Inner hub bearings	BRP117
2	Outer hub bearings	BRP118
1	Steering quick release	BRP179
2	Slider collars for T/A	BRP181-1A
1	Left ford steering arm	BRP209
1	Right ford steering arm	BRP211
1	Alum. pitman arm	BRP220
2	Alum. torsion bar stops	BRP263
2	Torsion bushings	BRP264B
2	Side mounts for center steering	BRP215
1	Center mount	BRP274
2	Front shock sliders	BRP280
2	Rear shock sliders	BRP284
1	Rear motor plate	BRP292
1	Inboard bell-housing	BER300
1	Left front motor mount	BRP304
1	Right front motor mount	BRP325
1	(SB or BB) Front motor plate	BRP3**
2	Rear spindle nuts	BRP320
2	Bolt kit for 343 drive flanges	BRP339
2	Rear axle drive flanges	BRP343
1	Front panhard slider	BRP398
1	Brake line kit	BRP407
1	Chassis bolt kit	BRP408-3
1	Gas pedal rod	BRP410R-2
1	Brake pedal	BRP411
1	Brake pedal rod	BRP4340-12
1	Steel gas pedal	BRP413
1	Front T/A pick up slider rod	BRP419
1	Safety cable	BRP420
2	Slider rods for T/A	BRP421
1	Slider plate for T/A	BRP418
1	Rubber torque arm mount	BRP424
2	0° torque arms	BRP426
1	T/A rear end thru bolts	BRP442
2	C Rear spindle bolt kits	BRP472C
2	Rear 8 bolt spindles	BRP486
2	Driveshaft slip yokes	BRP509
2	U-joints	BRP512
1	Power steering reservoir	BRP562B
1	46" power steering pres. hose	BRP577

Option 2



DOM chassis with bumpers, side rails & white body installed

QTY.	DESCRIPTION	P/N
1	Power steering return hose kit	BRP582
2	Bilstein coil over kits	BRP614-7
1	5/16 R.H. jam nut (gas pedal rod)	BRP778
1	5/16 L.H. jam nut (gas pedal rod)	BRP779
1	3/8 L.H. jam nut (brake rod)	BRP781
9	5/8 R.H. jam nuts	BRP786
10	5/8 L.H. jam nuts	BRP787
2	One piece wide 5 hubs	BRP821
2	Inner hub bearings	BRP828
2	Outer hub bearings	BRP829
2	Hub seals	BRP835
1	Rear end vent kit	BRP910
1	Rear panhard rod	BRP1145
1	Front panhard bar	BRP1210
4	Front radius rods	BRP1250
1	900# spring rod	BRP1399-900
2	Front axle brackets	BRP1505
2	Torsion bearings	BRP1533
2	Torsion spacers	BRP1535
1	Fuel cell box	BRP1598
1	Front panhard mount	BRP1622
1	Rear end panhard mount	BRP1624
1	Driveshaft cover	BRP1645
1	Front driveshaft hoop	BRP1646
1	Rear driveshaft hoop	BRP1647
20	5/8" coarse wheel nuts	BRP2051
1	Solid rear axle	BRP3020
1	Solid rear axle	BRP3076
1	16-16 spline 20 inch driveshaft	BRP4044
1	L.R. roller B/C assembly	BRP4292
1	R.R. roller B/C assembly	BRP4293
1	L.R. torsion arm	BRP4400
1	R.R. torsion arm	BRP4402
2	Torsion arm safety bolts	BRP4403
2	Panhard frame mount (BRP 4549 adjustable optional)	BRP4550
1	Panhard support bracket	BRP4552
2	Ft. alum. billet L.W. spindles	BRP4590
1	Fuel filter	BRP5032-8
1	Quantum gauge panel O.P./W.T. w/ warning lights & Ign. switches	GAU5104
1	Black powder coated wind screen	BRP7107B
1	Radius rod for spring rod	BRP1385-18
1	Left rear radius rod	BRPRR27-1/2
1	Tie rod for 52" axle	BRPRR48-1/2
1	Drag link bent	BRPRR64B
1	Front axle	BRPEC52BOC
3	Roll bar padding - Specify Color	

Option 3



Kit car with parts listed below / car is unassembled

QTY.	DESCRIPTION	P/N
1	5/16 R.H. male gas rod	BRE1051R
1	5/16 L.H. male gas rod	BRE1051L
1	3/8 L.H. brake rod	BRE1061L
2	5/8-5/8 R.H. male rod ends	BRE5101R
3	5/8-5/8 L.H. male rod ends	BRE5101L
1	5/8-5/8 L.H. male prec / tie rod end	BRE2101L
1	5/8-5/8 R.H. male prec / tie rod end	BRE2101R
6	5/8 -1/2 R.H. male rod ends	BRE5081R
6	5/8 -1/2 L.H. male rod ends	BRE5081L
2	Front calipers	BRP170-1525
2	.810 rear calipers	BRP170-4090
1	R.F. 12-150 spring (175# for big block)	EIB1200.250.0150
1	L.F. 12-250 spring	EIB1200.250.0250
1	Open drive transmission	BERMOZ
1	Starter (inboard)	BER323M
1	Griffin radiator	GRF165194P
1	Kirkey alum. seat	KIR56300
1	Black tweed cover	KIR56311
1	Steering wheel padding	KIRO0021
2	High density roll bar padding	KIR99041
1	22 gallon 23x17x14 fuel cell	F-SRB222B-C
1	Fuel line kit	KBP301
2	Fuel filter clamps	KBP40C
2	Front shock 162/55 valving	BILB46-0210C
2	Rear shock 208/72 valving	BILB46-0207B
1	Steering box	PRFBOX-210
1	15" dished steering wheel	REB270-8645
1	Master switch	REB160-1500
1	Black belt / harness kit	LEA70075
1	Torco manual transmission fluid	TORA200022
1	Wilwood brake balance bar	WIL340-4630
1	Wilwood 7/8" brake master cylinder	WIL260-3376
1	Wilwood 1" master cylinder	WIL260-3378
2	Aluminum wide 5 rear hubs	WIL270-1956C
1	Rear Polymatrix brake pads (4 pads)	WIL158-4410K
1	Fit Polymatrix single brake pads (4 pads)	WIL158-3990K
1	Sprint center w/HD gear cover	WINKS2805-ASS
4	U-bolts	WINS855
1	Right rear torsion bar	WIN6362-900
1	Left rear torsion bar	WIN6362-950
1	Tie wraps	BRP2010
2	Wilwood Brake Fluid	WIL290-0632
1	Cyclone Battery	GNBDT650T
1	Ground Cable	BRP5107
1	Power Cable	BRP5107-1
1	Rear End Vent Fitting	XRP249008
3'	Vent Hose	KBPC108
1	Vent Filter	K-N 62-1010

**OPTION 4** Complete Car as above with chassis & bumpers Powder Painted "Car is assembled."

### UPGRADING Options on Kit or Roller Available

- Powder paint Chassis & Bumpers
- Complete Colored Body
- Colored Exterior Body Panels
- Chrome Interior Wings & Deck
- Coil Over Weight Jack
- Autometer Electric Tach with Recall
- Female Dry Break with Hose #DBF250
- KBP132B 32 Gallon Fuel Cell -REQUIRES A BRP1598-32 CAN
- Fuel Safe Cell #RB224 Standard Fill Top With Vent Hose & Filter
- VRP Aluminum Shocks
- Tall Rollcage (2" taller than stock)
- Gundrilled Rear Axles
- Deluxe Kirkey Lightweight Custom Seat
- Kirkey Containment Seat
- Labor to install above Seat
- Head Rest & Pad
- Power Steering Pump & Pulley
- Magnesium Hubs BRP6200
- Aluminum Pats Radiator (Downflow) or (Cross Flow with No Filler Neck)
- Fiberglass Fan Shroud
- Parker Fresh Air System (Helmet Fan)
- BRP 4549 Adjustable Rear Panhard assembly
- Chrome Bumper Package
- Powder paint Chassis & Bumpers / Included with Complete roller price (Option 4)
- Standard colors of paint = White, Black, Red, Blue, Silver, Gray, Orange
- Powder paint Yellow or Purple
- Powder paint Candy color 2 coat / Candy Blue, Silver, Red, Flourescent orange
- Colored fiberglass / scoop, cowl, wheel tub & roof
- Radius rod tin
- Removable front shock towers
- Tall door (3" taller than stock)
- Driver back 3" from stock
- Profile PRO aluminum steering gear
- Labor to install Brake line kit (standard BRP 407 kit)
- Labor for installation with Right front shut off

## BODYS

2003 and newer BRP bodies are CAD CAM designed and CNC stamped for easy customer service

- Available in standard white made from .040" aluminum, optional black, red, yellow, or blue, made from .050" aluminum
- Chrome polish and gold wings available in .040 only
- Add 20% to cost for colored panels and 40% for polished panels

2003 and newer body panels are in stock at the Canadian warehouse for fast delivery times

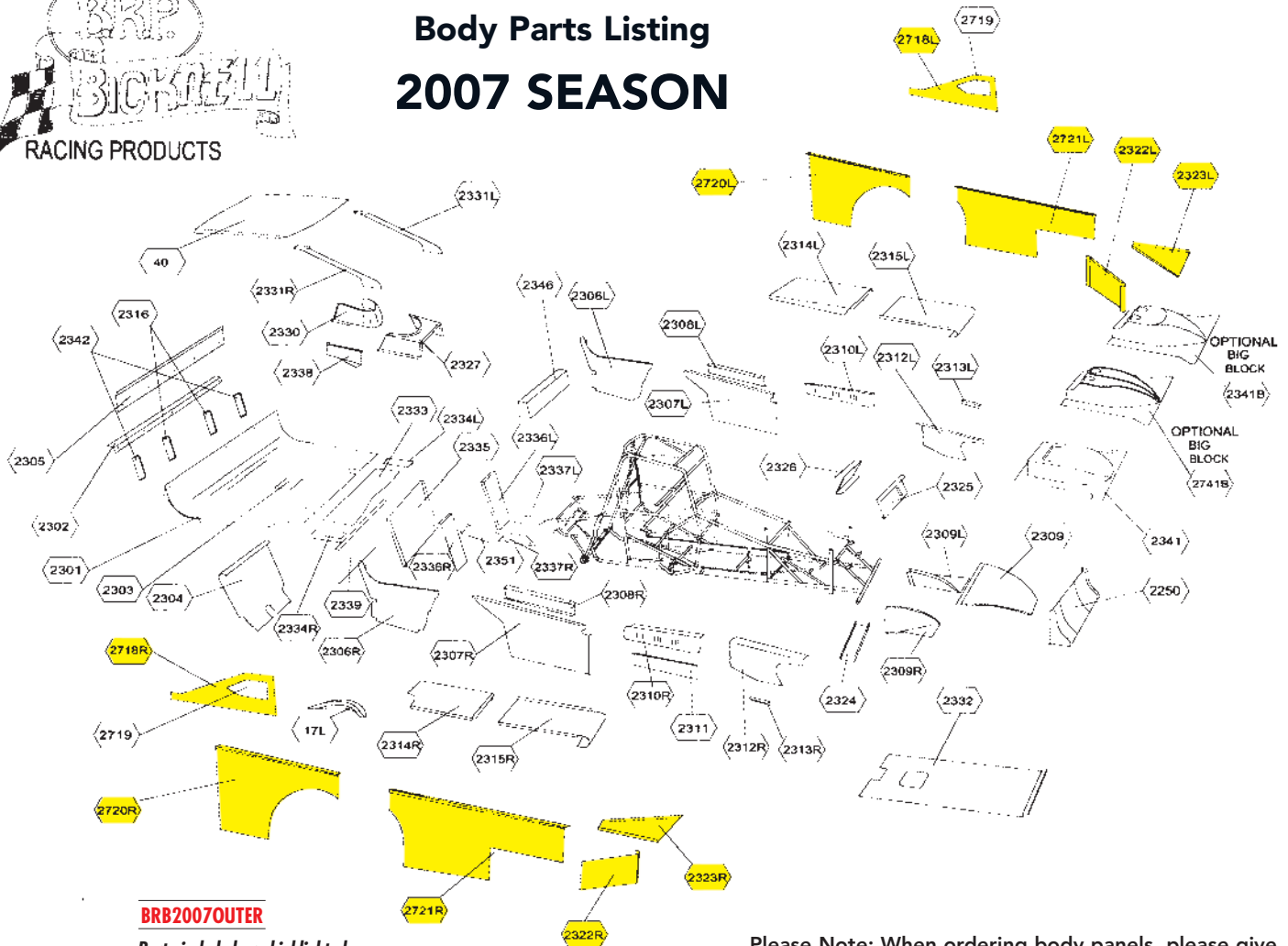
**1992 THRU 2002 body panels are special order and are hand made from CNC COMPUTER TEMPLATES**

*These body panels will be custom made, so may require a longer lead time*

- SPECIAL ORDER BODY PANELS ARE NON-RETURNABLE
- When ordering body panels, please be sure to include the SERIAL NUMBER of the car (found on the left frame rail)
- Due to some customer modifications, some factory body panels may not fit properly. In such cases, it will be up to the customer to modify the panel(s) accordingly. BRP WILL NOT BE RESPONSIBLE FOR MIS-ORDERED BODY PANELS



## Body Parts Listing 2007 SEASON



**BRB2007OUTER**

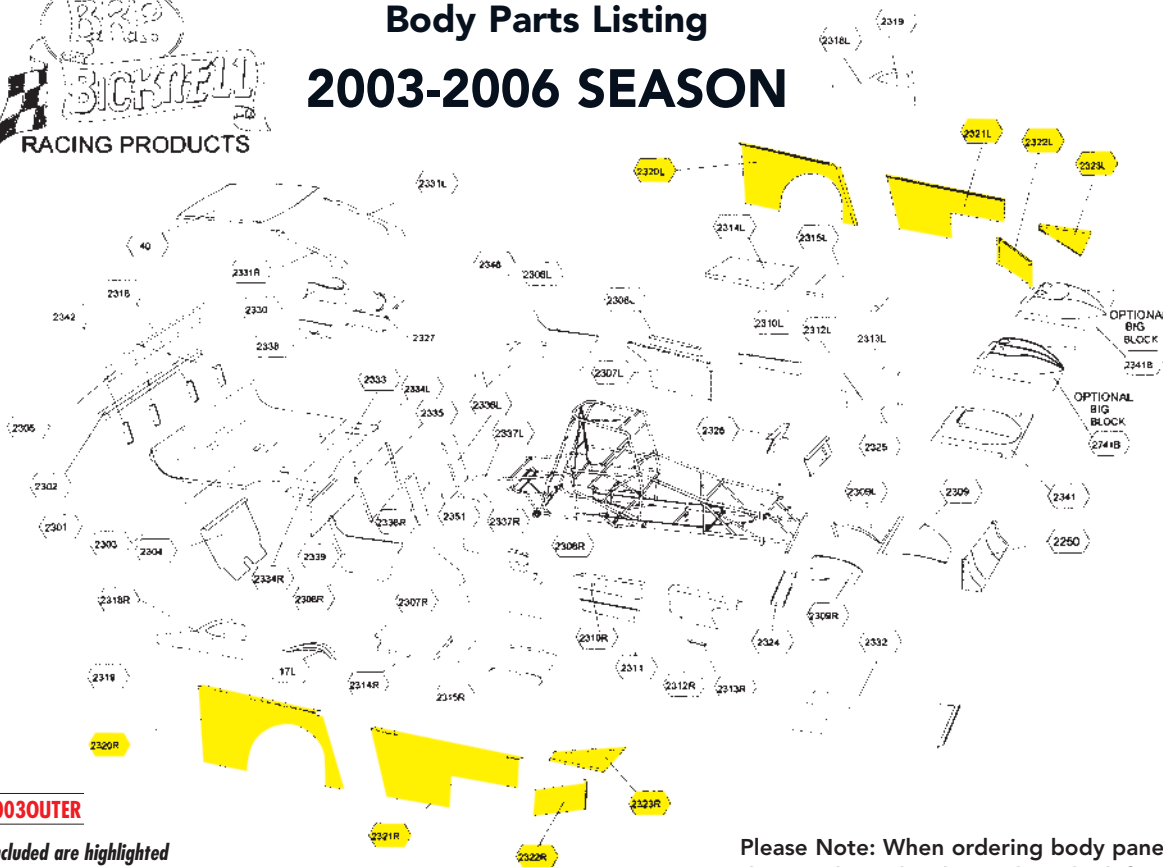
Parts included are highlighted (Lexan not included)

Please Note: When ordering body panels, please give the Serial Number located on the left side 2X4 frame.

## BODYS



### Body Parts Listing 2003-2006 SEASON



#### BRB2003OUTER

Parts included are highlighted  
(Must use BRB2318L&R with 2003OUTER)

Please Note: When ordering body panels, please give the Serial Number located on the left side 2X4 frame.

### FRONT CLIPS

Order With  
Serial # of Car



**STOCK CLIP** BRPFCLIP2  
**1-1/2" RAISED NOSE** BRPFCLIP2-1.5

Is radiator forward but includes the complete midrail tube so the customer can cut the midrail where he sees fit. Note- does not include radius rod posts or radius rod braces, and does not come with any part of the floor.

**STOCK CLIP** BRPFCLIP1  
**1-1/2" RAISED NOSE** BRPFCLIP1-1.5

Is shock towers forward but also includes the complete midrail tube so the customer can cut the midrail where he sees fit. Note- does include radius rod posts or radius rod post braces, does not include radiator bar or radiator mount, does not include 1" diameter diagonal brace, does not include any part of floor, also does not include 1-1/2" diameter uprights for front of 2X4.

### REAR CLIP



#### BRPRCLIP1

Rear clip for 2000X or newer

**UPPER REAR CLIP POCKETS**  
2 per car MFGCHA83

**LOWER REAR CLIP POCKET**  
2 per car MFGCHA82

## MIDRAIL FRONT BUMPER



**BRP464 (Stock)**

- 1-1/4" pocket style
- 1998 & newer chassis

### OPTIONAL BUMPERS

1-1/2" Raised Nose **BRP464-1.5**

## Front Crash Pockets (1-1/2" OD)

### UPPER

**MFGCHA74**



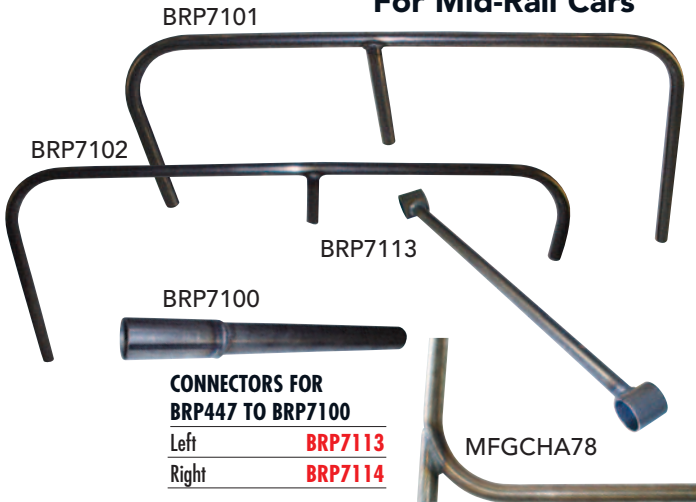
### LOWER

**MFGCHA75**



## 2000X & NEWER SIDE BUMPERS

For Mid-Rail Cars



### CONNECTORS FOR BRP447 TO BRP7100

Left **BRP7113**  
Right **BRP7114**

**MFGCHA78**

DESCRIPTION	P/N
Rear inner side bar post	<b>BRP7100</b>
2 pockets per post	<b>MFGCHA84</b>
Right & left middle hoop	<b>BRP447</b>
1 upper pocket per hoop	<b>MFGCHA82</b>
1 lower pocket per hoop	<b>MFGCHA81</b>
Right outer side bar	<b>BRP7101</b>
Left outer side bar	<b>BRP7102</b>
Mid Rail jackpost	<b>MFGCHA78</b>

## CLIP PINS



Clip pins can make changing side bars and bumpers a snap!

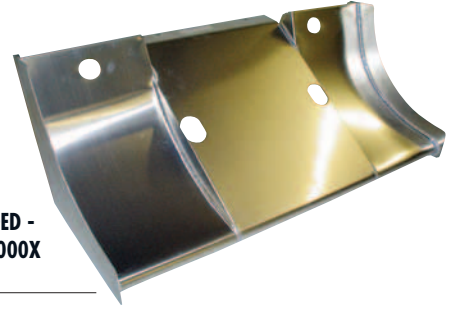
### Bumper Clip Pin

**BRP1527**

Sold Individually

## FRONT SPOILERS

Serial # required to get proper nose



ALUMINUM TIG WELDED - CURVED STYLE FITS 2000X AND NEWER MODELS

**BRB2250 (Stock)**

### OPTIONAL NOSES

1-1/2" Raised Nose **BRB2250-1.5**  
3" Raised Nose **BRB2250-3**

### FLAT NOSE

**BRB2001FSPOILER**

## SPOILER MOUNTS



2000X MID-RAIL FRONT SPOILER SIDE MOUNT LEFT SIDE (5/8" TUBING)  
**BRP7110**



2001 AND NEWER MIDRAIL RIGHT SPOILER MOUNT (5/8" TUBING)  
**BRP7110R**

1 POCKET PER MOUNT  
**MFGCHA106**

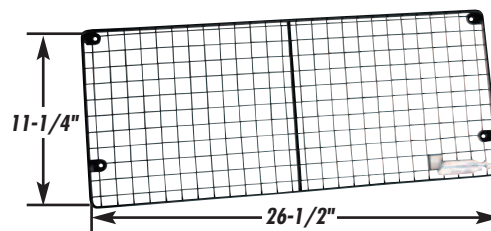
## SHOCK TOWERS



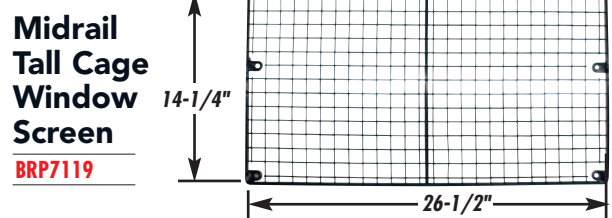
### MID-RAIL SHOCK TOWERS (2001 AND NEWER)

Left or right front shock tower **MFGCHA100**  
Right front shock tower for 2000X **MFGCHA101**  
Left or right front shock tower (bolt on) **MFGCHA100BO**

## WINDOW SCREENS

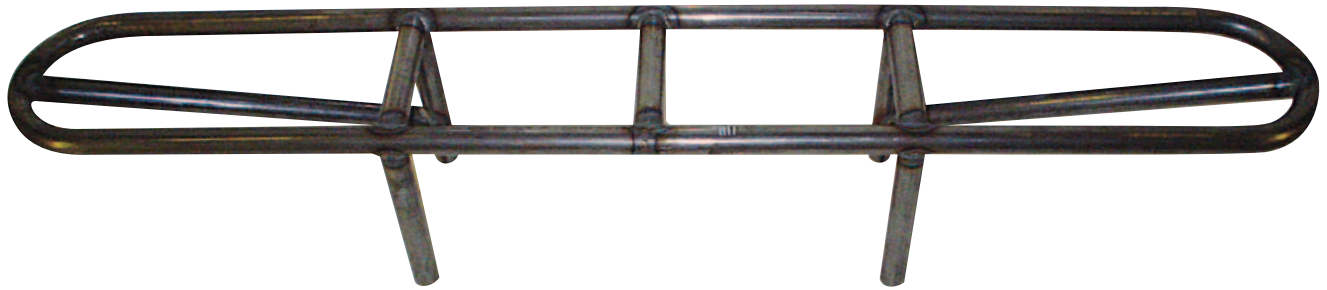


Midrail Window Screen  
**BRP7107B**



Midrail Tall Cage Window Screen  
**BRP7119**

**MIDRAIL REAR BUMPER**



**Rear Bumper For Cars  
Built After 7/25/00**

**BRP7111**

26-1/2" CENTER TO CENTER

**REAR CRASH POCKETS**

Upper **MFGCHA83**

Lower **MFGCHA82**

**ROOF MOUNTS**



**MID-RAIL FRONT ROOF MOUNT**

**BRP7108**

**FRONT ROOF MOUNT POCKETS**

2 per mount **MFGCHA106**



**MID-RAIL REAR ROOF MOUNT**

**BRP7109**

**REAR ROOF MOUNT POCKETS**

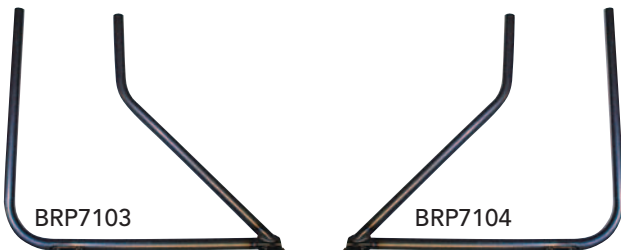
2 per mount **MFGCHA106**



**ROOF MOUNT EXTENSIONS**

2 per car **BRP7112**

**REAR BODY SUPPORTS**



**Midrail Lower Quarter  
Panel Body Mounts**

*Fit 2000X and newer*

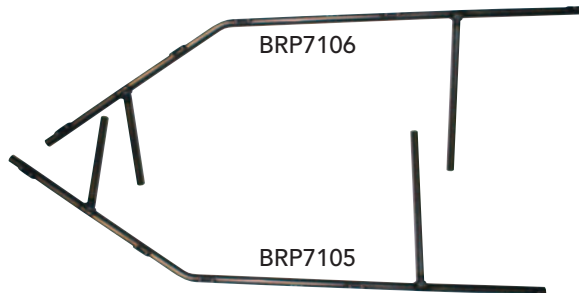
Left Side **BRP7103**

Right Side **BRP7104**

**REAR BODY MOUNT POCKETS**

2 per mount **MFGCHA85**

**DOOR SUPPORTS**



**MID-RAIL LEFT SIDE DOOR MOUNT**

**BRP7105**

**MID-RAIL RIGHT SIDE DOOR MOUNT**

**BRP7106**

**DOOR MOUNT POCKETS**

2 per mount **MFGCHA87**

**SET UP STANDS**

**LEFT FRONT (4-7/16")**

**BRP1553**

**RIGHT FRONT (3-11/16")**

**BRP1552**



**LEFT REAR (4-1/4")**

**BRP1538**

**RIGHT REAR (3-3/4")**

**BRP1539**



Note: For straight doors, add "S" to door mount part #

## FIBERGLASS PARTS



### WHEEL TUBS

Right Side **BRB17**  
Right Side Long **BRB17L**



### MODIFIED FIBERGLASS D.I.R.T. LEGAL ROOFS

**BRB40**



### FITS UP TO 2002 WITH TIN COWL

**BRB9941**



### DRIVERS COWL

**BRB2327**

Works with BRB2341,  
BRB2341B, BRB2341R  
and BRB2741B



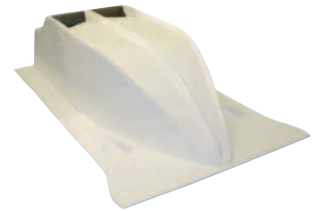
### FIBERGLASS HOOD D.I.R.T. LEGAL

**BRB2341**



### FIBERGLASS HOOD BIG BLOCK 1-3/4" TALLER THAN BRB2341

**BRB2341B**



### FIBERGLASS RAM HOOD WITH SCOOP D.I.R.T. LEGAL

**BRB2741B**

## RADIATOR BRACKETS



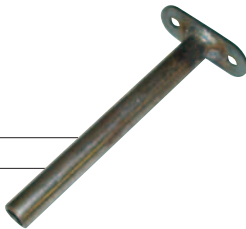
### CENTER MOUNTED OFF CROSS BARS STEEL RADIATOR BRACKET

**BRP1508**

(Fits all 1998 and newer)

### UPPER RADIATOR EXTENSION POST

**BRP1508E**

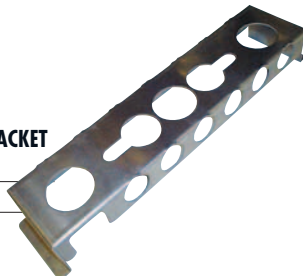


### BILLET RAD MOUNT FOR 1-1/4" TUBING

**BRP1576**

### ALUMINUM RADIATOR BRACKET SIDE MOUNTED

**BRP1508A**



## BOLT KIT

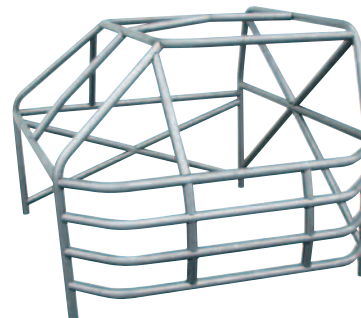
### Complete Bolt Kit For Mid Rail Chassis

**BRP408-3**

Other bolt kits available, please call for  
more information.



## STREET STOCK ROLL CAGE KIT



### 6 Point Roll Cage Kit (Unwelded)

**BRP1512**

1-1/2" X .120 ERW Tubing

## DOWNTUBE CHASSIS PARTS

### D/T FRONT BUMPERS

#### DOWNTUBE

Fits '91 to '97 except 1994	<b>BRP461</b>
1994	<b>BRP461W</b>

### D/T DOOR SUPPORTS

#### LEFT DOOR MOUNT FOR '96, WIDE BODY DOWNTUBE

**BRP1523-96**

#### LEFT DOOR MOUNT FOR '97 AND NEWER DOWNTUBE

**BRP1523-97**

#### '97 AND NEWER RIGHT DOOR SUPPORT ( 3" HIGHER) DOWNTUBE

**BRP1524-397**

Left side 45° D/T **BRP1536**

Right side 45° D/T **BRP1537**

### D/T SINGLE SIDE BUMPERS

DESCRIPTION	P/N
95-97 left outer bumper rail for 3 bar front end	<b>BRP445</b>
98-99 short left outer for 4 bar front end cars (25" radius rods)	<b>BRP445S</b>
95-97 right outer bumper rail for 3 bar front end	<b>BRP446</b>
98-99 short right outer for 4 bar front end cars (25" radius rods)	<b>BRP446S</b>

DESCRIPTION	P/N
Right & left middle hoop all single side bars	<b>BRP447</b>
Left back hoop prior to 1997	<b>BRP448</b>
Left back hoop for cars with low radius rod slug at 3-1/4" 1997 & up	<b>BRP451</b>
Right inner hoop 97 & prior with high radius rod post	<b>BRP449</b>
Right back hoop for cars with low radius rod slug at 3-1/4"	<b>BRP452</b>
Right rear inner single side bar post for 97 and newer downtube coil over cars	<b>BRP444</b>

### D/T REAR BUMPERS

#### Downtube '95 - '00 & Midrail up to 7/25/00

**BRP463**

29-3/4" Center to Center

This rear bumper has the same dimensions as the BRP462 bumper, but the corner brace pockets have been removed.

#### Downtube '95 - '97

**BRP462**

Long tail

70" rear crash bar with rear corner brace pockets For use with BRP1519L & BRP1519R listed below.

#### RIGHT SIDE

**BRP1519R**

#### LEFT SIDE

**BRP1519L**

### D/T SHOCK TOWERS

#### '98 TO 2000 DOWNTUBES USING

#### BRP 464 FRONT BUMPER

Left front shock tower **MFGCHA99LF**

Right front shock tower **MFGCHA99RF**

#### 20" RIGHT SHOCK TOWER FOR PANHARD SLIDER (NO SLUG )

**BRP1506-1**

*Fits most pre 1998 Downtube chassis*

#### LEFT SHOCK TOWER ( LONG - 80 BEND)

**BRP1507-1**

*Fits most pre 1998 Downtube chassis*

### D/T DOUBLE SIDE BARS

#### Special Order Double Tube Side Bumper (88-92)

SIDE	P/N
Right	<b>BRP453</b>
Left	<b>BRP455</b>

#### Round Tube Side Bumper (93-95)

SIDE	P/N
Right	<b>BRP454</b>
Left	<b>BRP456</b>

### D/T ROOF MOUNTS

#### DOWNTUBE FRONT ROOF MOUNT

**BRP1530**

### D/T REAR BODY SUPPORTS

#### Rear Quarter Panel Supports

*Fit 98 and older downtube*

Left Side **BRP1504L**

Right Side **BRP1504R**

#### Double Slug Rear Corner Body Mounts

*Fit 99 and newer downtube*

Left Side **BRP1503L**

Right Side **BRP1503R**

### D/T WINDOW SCREENS

#### Short Dirt Modified Window Screen

**BRP1526S**

26" Wide x 18" High

15" Button Center